

# Application News



JB27199XX

# Probes and Preset Selection and Management

**on**

**Vivid**

**S70 / E90 / E95**



## Content

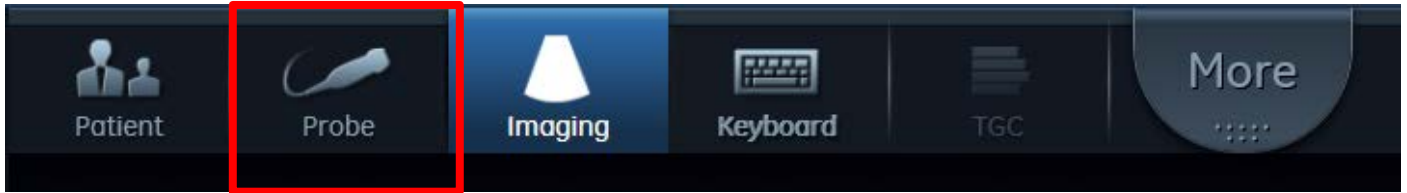
Content .....	3
Probe Selection .....	4
Probe Menu.....	5
Overview .....	5
Probe Label.....	6
Default Preset.....	6
GE Factory Preset .....	6
User Preset .....	6
Protected Preset .....	6
Activation of the Probe .....	6
Prior settings .....	6
Preset Management.....	7
Enter Preset Manager.....	7
Overview .....	8
Managing Presets .....	9
Create New Preset.....	10
Managing your Preset.....	11
Activate .....	11
Properties .....	11
Remove From List.....	11
Move.....	12
Rename .....	12
Lock Preset .....	12
Delete.....	13
Cancel .....	13
Exit.....	13

This hand out is a summary and is not comprehensive.  
 For more detailed information please refer to the user manual and/or reference manual.



## Probe Selection

Use the Probe shortcut on the touch panel to enter the probe menu.



The probe menu will be displayed on the touch panel.

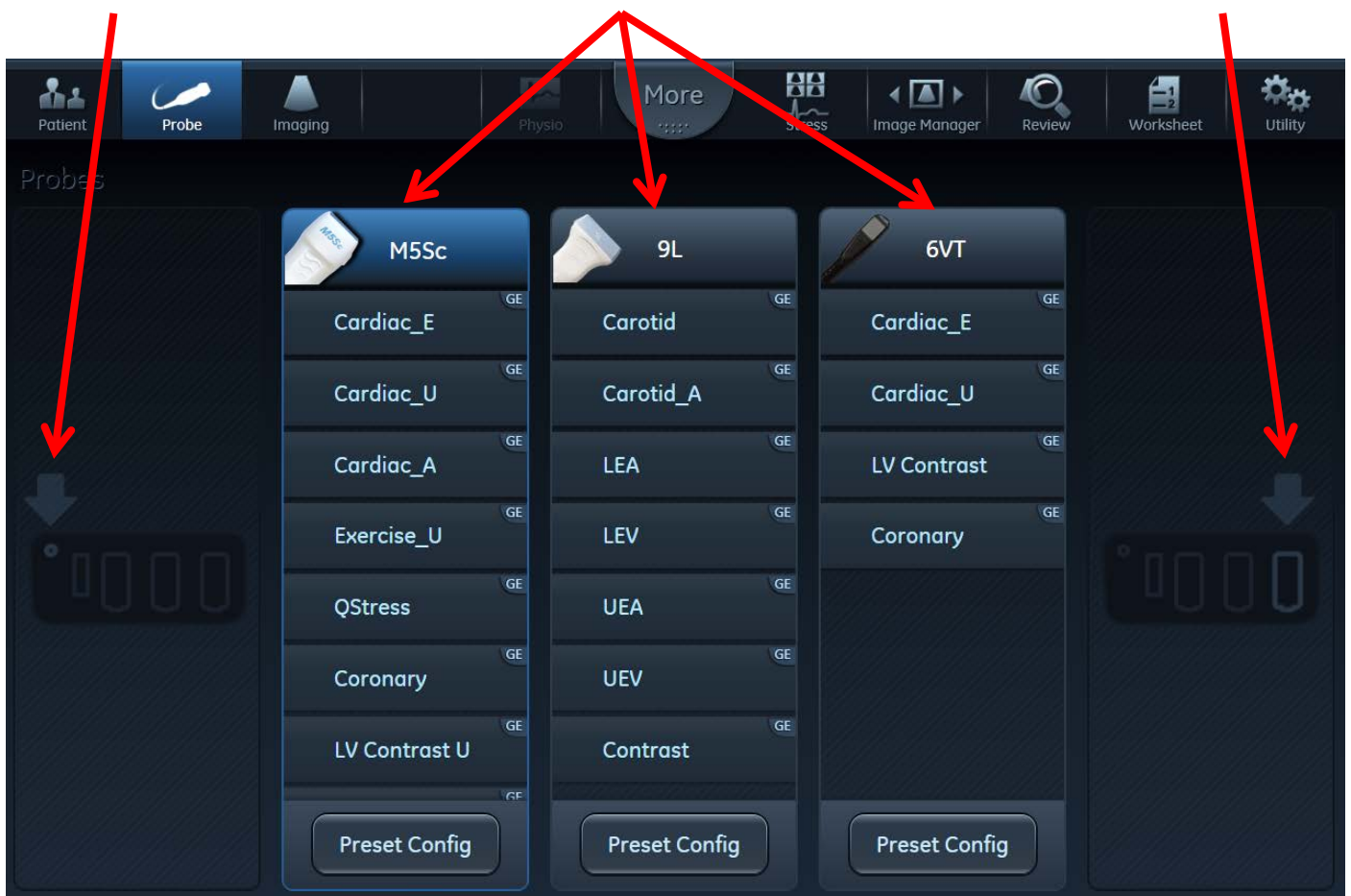
### Note

The position of the Probes in this menu might look a bit different on your system (depending on the system and probes in use).

Pencil probe connector

Probes connected

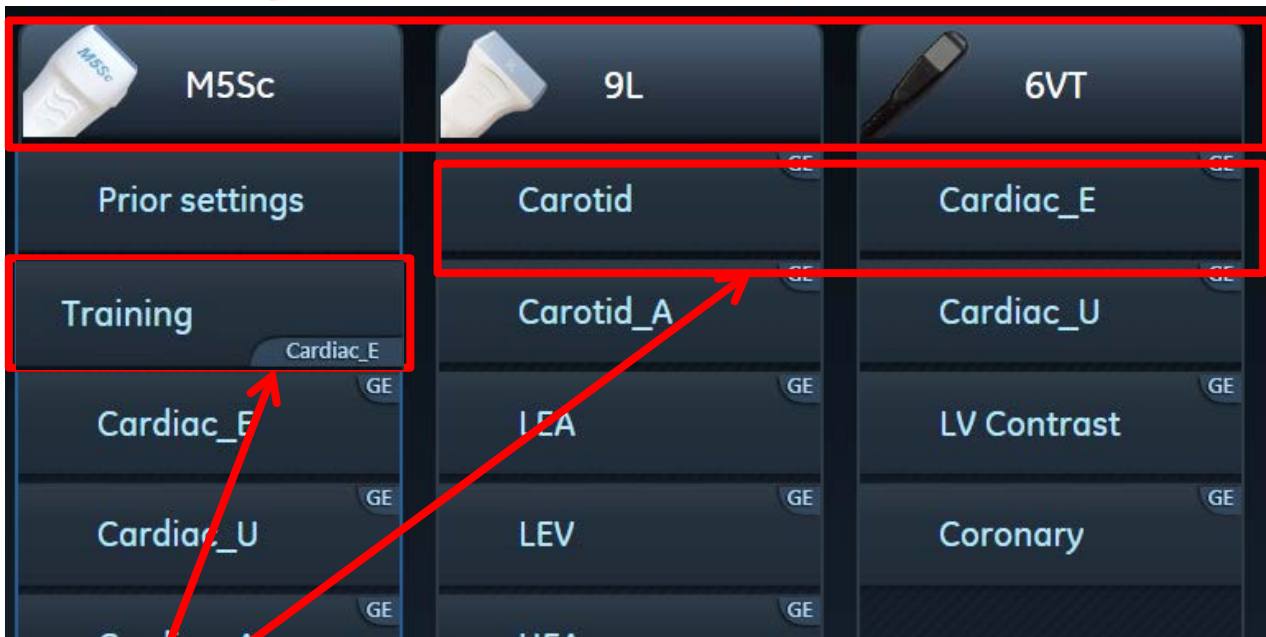
Empty connector



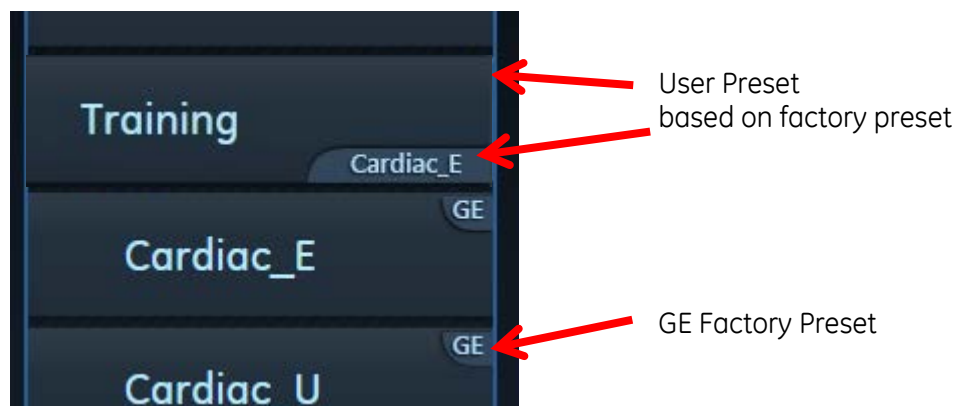
## Probe Menu

### Overview

Probe Labels



Default Presets



## Probe Label

Tap on the probe label to activate the probe with the default preset.

## Default Preset

The first preset in the list is always set as the default.

## GE Factory Preset

The GE icon on the right side indicates that this preset is a factory preset.

Factory presets can never be changed nor deleted and can therefore always be used as a standard to compare with.

## User Preset

The name on the right lower corner indicates the factory preset on which the customized preset is based upon

## Protected Preset

A preset that is locked by one user, to prevent others to do any changes on it.

## Activation of the Probe

Tap on the Probe Label to activate the probe with the default preset or tap directly on the preset that will be used.

## Prior settings

During an examination changes to the imaging settings may be done to get excellent images for this patient. Sometimes there is the need to change to another preset/probe in between to scan different type of images before returning to first probe selected

### Example

A cardiac exam was started with M5Sc, the user changes in between to the pencil probe, to acquire some special Doppler profiles. Now the user moves back to the M5Sc probe to continue the examination.

Traditionally, by selecting the probe with the factory/user preset, all the image tuning done before would be gone and the user would need to adjust image settings again.

With the new **Prior settings** function, the system will activate the probe with the last used settings. Thus, the user can continue with all the adjustments that were done before.

The Prior Settings function will immediately appear for the probe in use once you start the scanning and do first changes on the image.

Prior Settings always appears on top of the preset list, above the default preset.

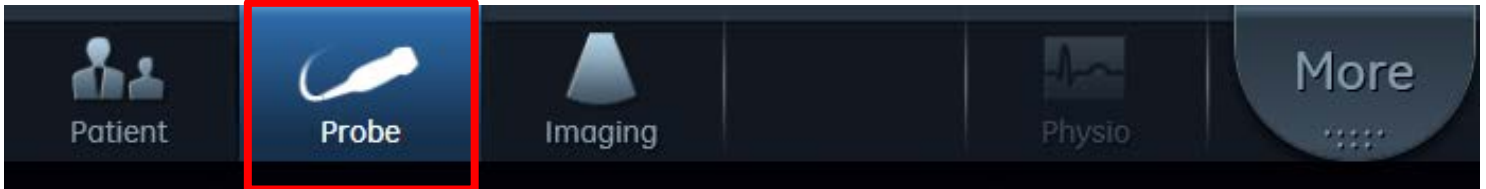
### Note

When activating the probe by tapping on the probe label, the probe will start with the default preset, not with prior settings.



## Preset Management

The Preset Manager needs to be used to configure the list of presets and store user presets  
Press the **Probe** button on the touch panel



### Enter Preset Manager

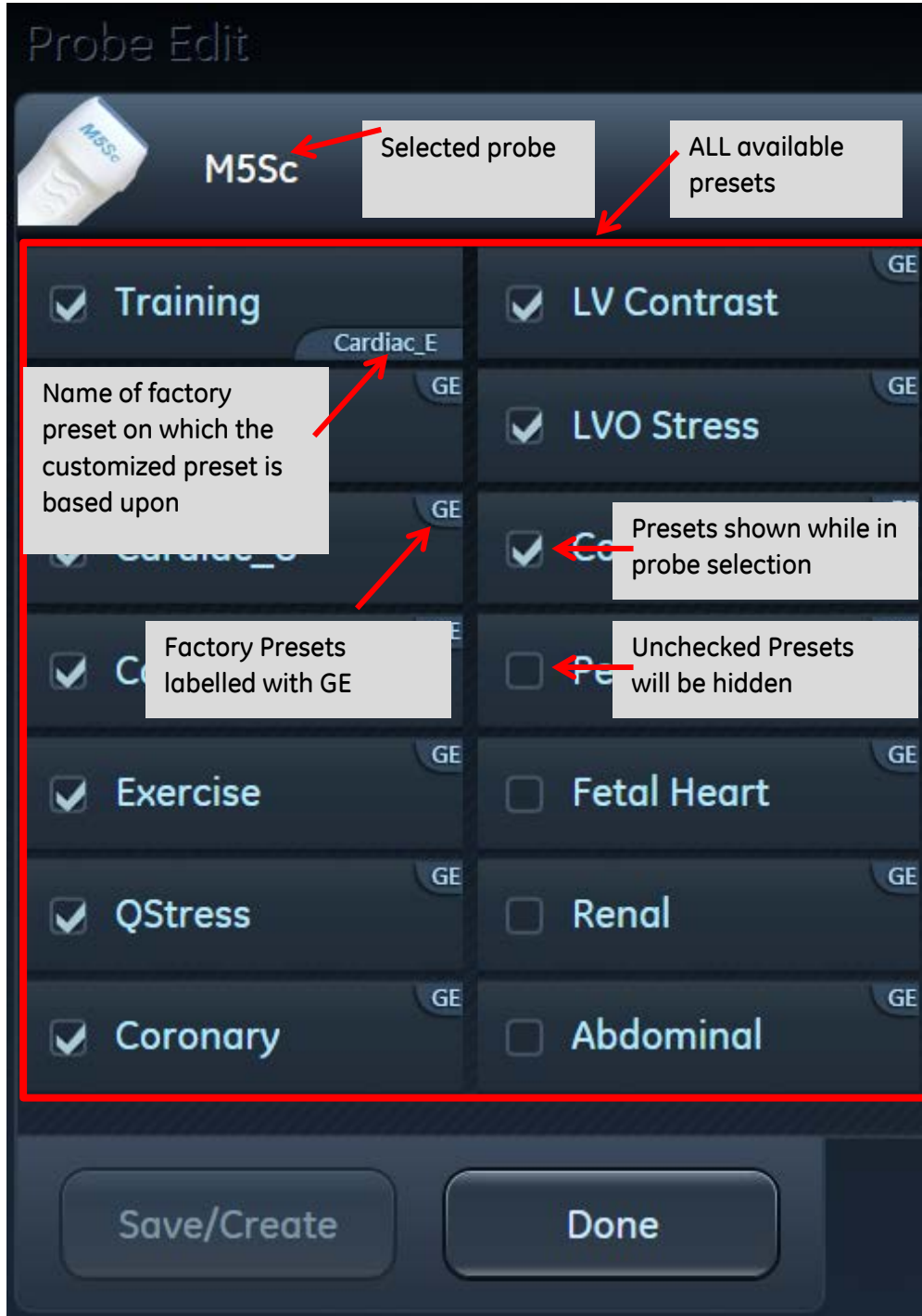
Choose the probe you want to configure and Tap on the **Preset Config** button in the lower part.





### Overview

Preset Manager is shown on the touch panel and therefore can be controlled by finger gestures on the touch.





## Managing Presets

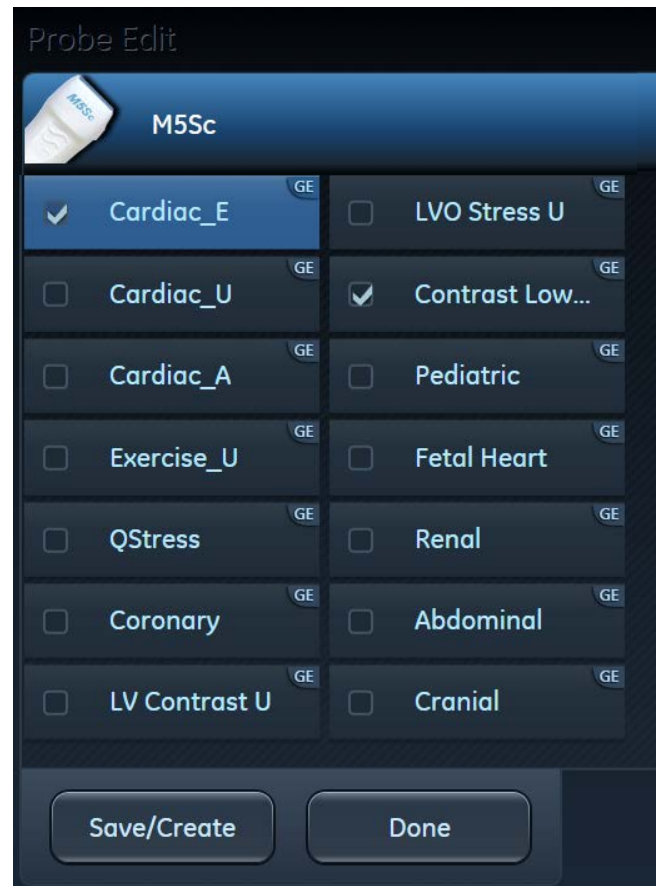
All presets **with** a checkmark in front of the name will be available in the probe selection menu. Presets **without** the checkmark will not be shown in probe selection.

Select all presets that will be used and deselect the presets that are not needed. This will help to keep a better overview in the list, while selecting the probes.

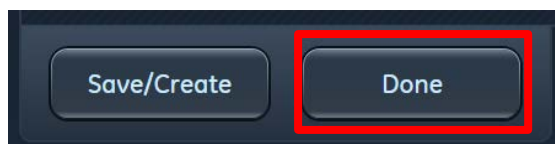
Before



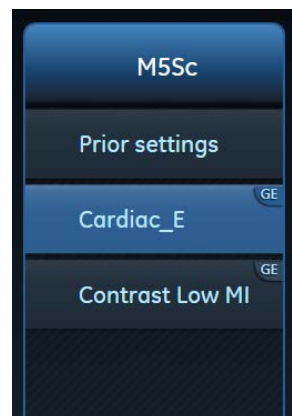
After



Tap on **Done** to store your selection

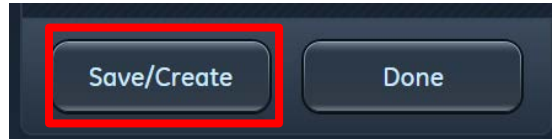


and see your result

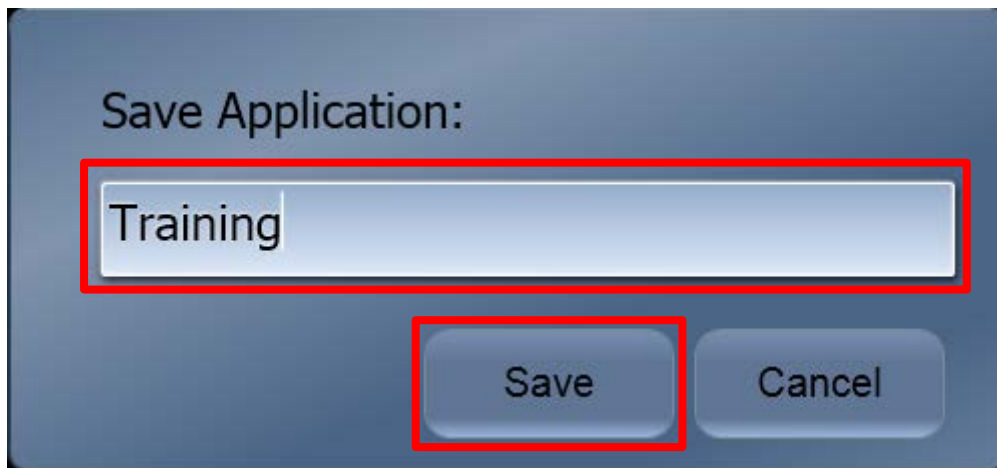


## Create New Preset

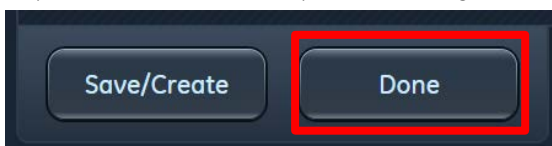
Take the factory preset fitting best as a starting point to make your adjustments. Optimize your preset, by adjusting e.g. depth, gain, width, scales, baselines ..... Tap on **Probe** and enter the **Preset Config** page. In the lower part click on **Save/Create**



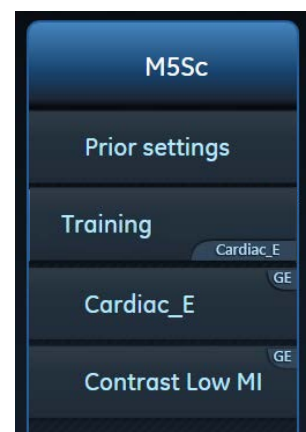
Enter a name for this new preset and tap on **Save**



Tap on **Done** to exit the preset Manager.



New Preset now included



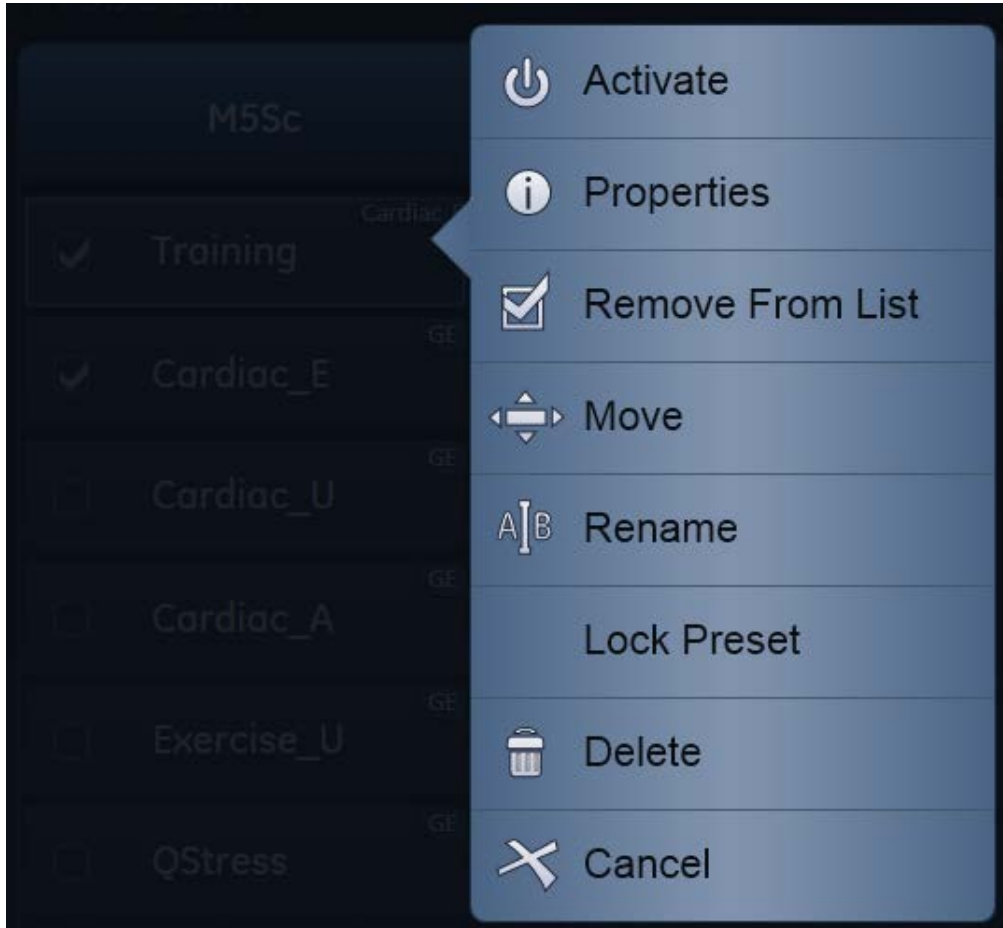
More adjustments can be done on the user presets for further optimization. To store them enter the Preset Config, Tap on Save/Create.

Either type in a new name to create a new preset or keep the name and just tap **Save** to overwrite the stored settings.

## Managing your Preset

To manage a preset, tap on it and a menu will open.

The following options will appear:



### Activate

Closes the preset configuration menu and activates this preset for scanning

### Properties

Gives additional information on this preset such as: Name, Creation Date, Base Preset...

### Remove From List

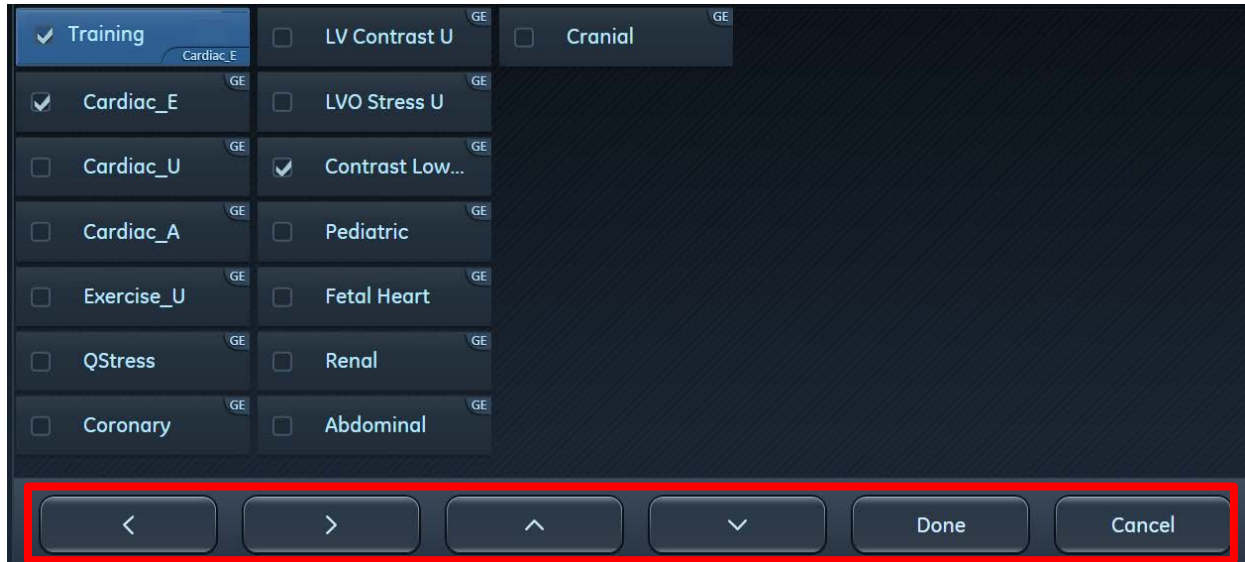
Removes the checkmark (can be done also by using the checkbox, the preset will no longer appear on the list)

## Move

It allows repositioning of a preset inside the probe menu.

A new window appears where you can use the arrows to move this preset up/down, left/right to sort it in the right place. Tap on **Done**, when the preset is placed on the desired position in the list.

The first preset in the list is always automatically the default.



## Rename

Tap on **Rename**, enter a new name for this Preset and tap on **Save**.

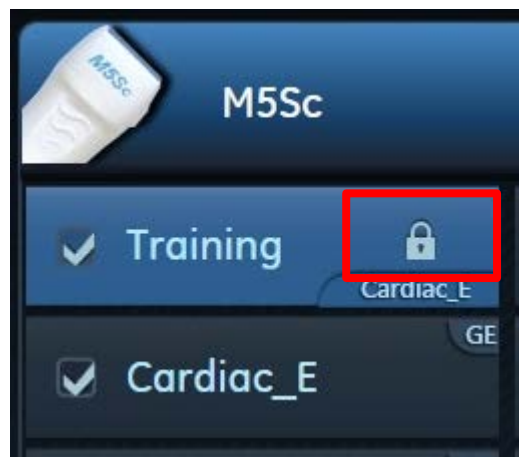
Only unlocked user presets can be renamed.

## Lock Preset

A preset can be locked by one user, to prevent others do any changes on it.

A locked preset can only be unlocked by the same user who locked it.

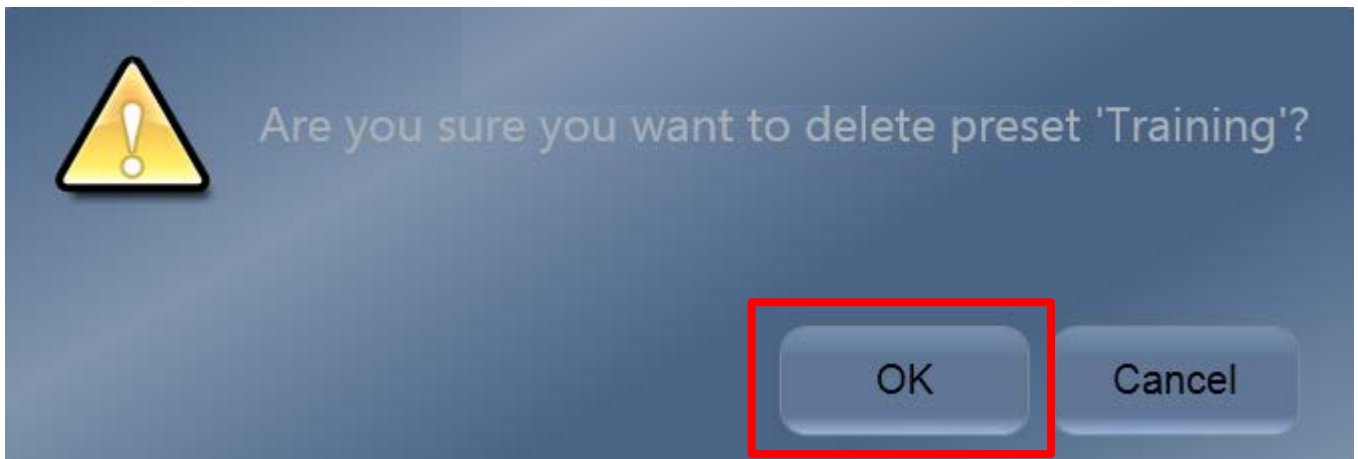
If a preset is protected, a lock icon is displayed next to it.



### Delete

Only unlocked user presets can be deleted.  
Factory presets will always be available so that user has a basic setting to start scanning.

Tap on Delete and the following message appears.  
If sure, tap on Ok and the preset will be deleted.



### Cancel

Tap on **Cancel** to leave without any changes.

### Exit

Exit the configuration page by tapping on **Done**.

