

# Application News



**Exporting images  
to a memory stick  
as DICOM®, AVI, JPG, MPEG  
on  
Vivid™  
iq /S70 / E90 / E95**



## Content

Content .....	3
Image Manager .....	4
Overview .....	4
Send to .....	5
Select images.....	5
Send to.....	5
Destination .....	6
File Type .....	6
Store Raw DICOM or DICOM.....	7
Store AVI, MPEG or JPEG .....	8

### NOTE

This hand out is a summary and is not comprehensive.  
For more detailed information please refer to the user manual and/or reference manual.



## Image Manager

### Overview

#### On Vivid S or E Series

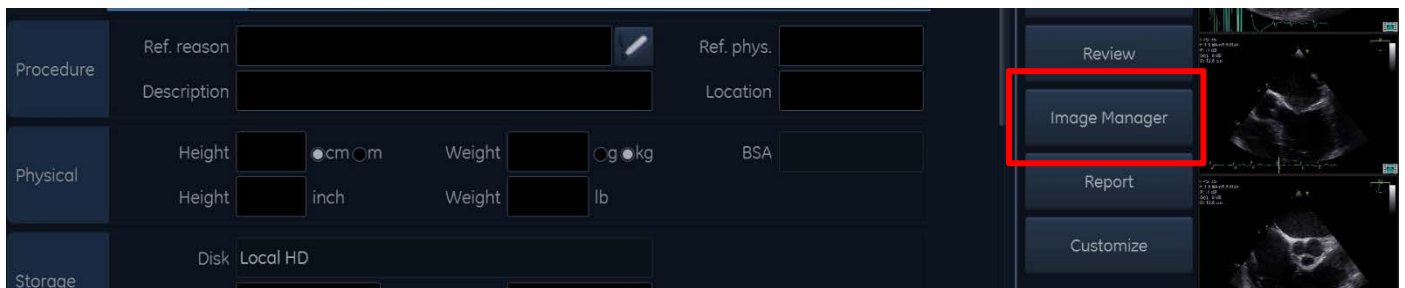
While being in an exam or a patient select the Image Manager from the shortcuts. It can always be found under the More functions, if not configured to appear on the touch panel shortcuts.



The Image Manager opens on the touch panel

#### In Vivid iq

Enter Patient Information screen and tap on Image Manager in the left side on the monitor.



The Image Manager will open on the monitor.

## Send to

This function is used to send images to a Destination, e.g. a USB Memstick in formats such as jpeg or avi, easy to use for presentations, storage or sharing with colleagues.

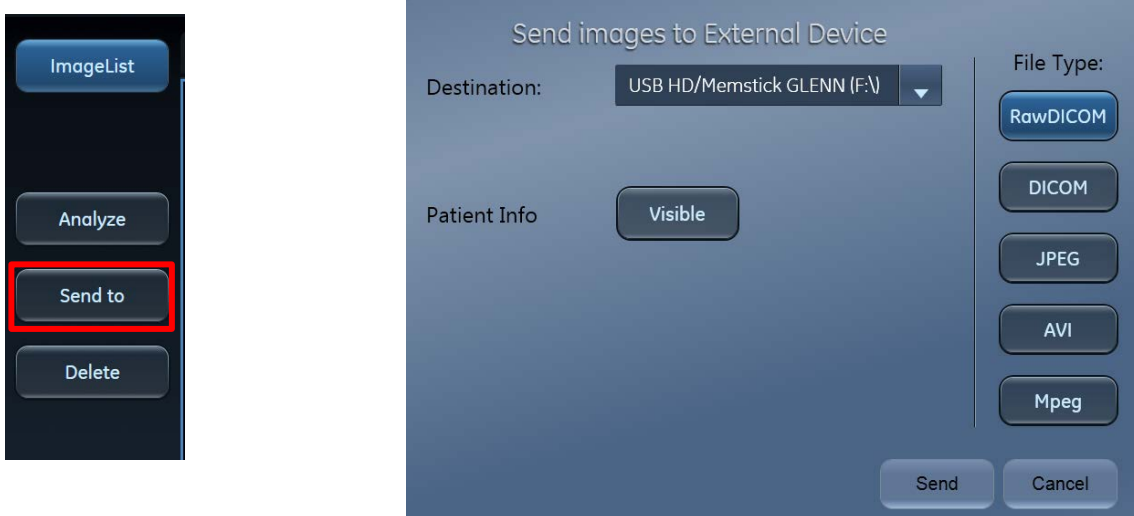
### Select images

Select the Exam Tab you want to copy images from or enter the Image List and select images from different examinations you want to copy.



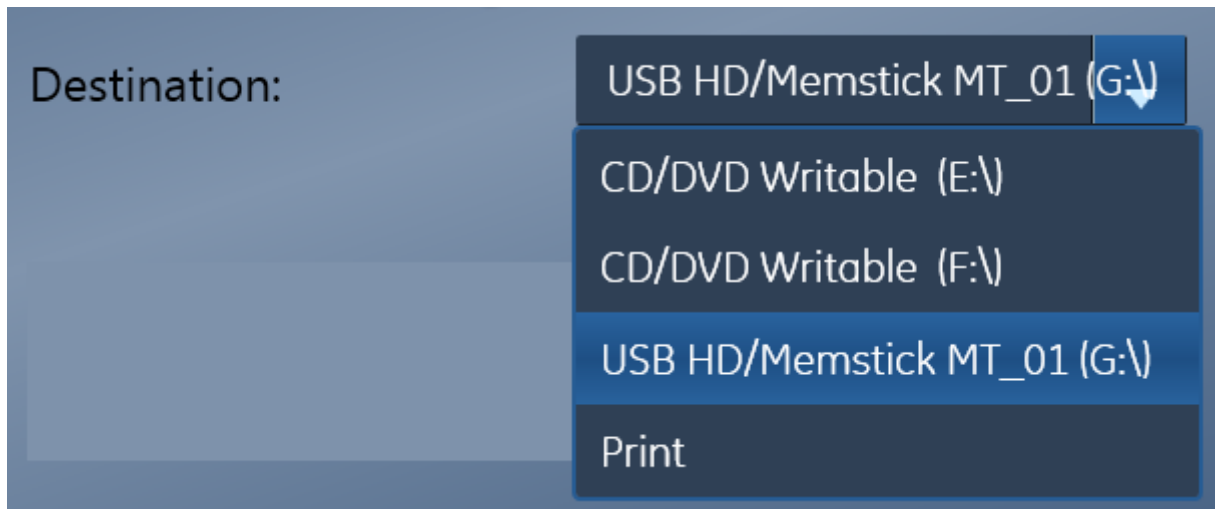
## Send to

Tap on **Send to** and follow the next steps in the following window



### Destination

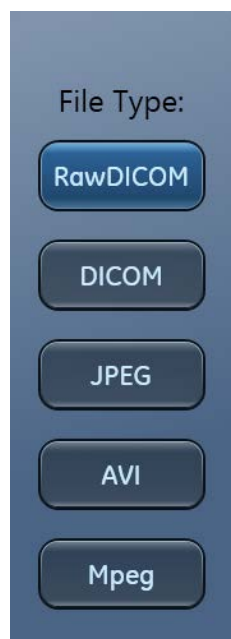
Select the Destination to send the images to:



### File Type

Select the desired file type (or file format)

- RawDICOM     DICOM files with embedded Raw Data information
- DICOM         DICOM files – images need a DICOM Viewer to be displayed
- JPEG          Still images to be used for e.g. presentations
- AVI            Cineloops to be used for e.g. presentations
- MPEG         Cineloops, smaller file format than AVI



### Store Raw DICOM or DICOM

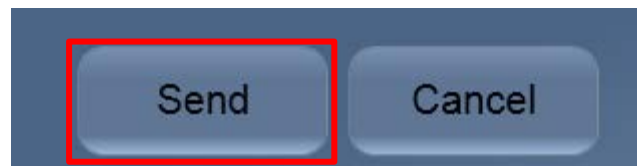
Select either Raw DICOM or DICOM from the File Type List.

#### Anonymize Patient:

If you want to anonymize the patient data change the Patient Info from **Visible** to Anonymize.



Tap on **Send**:



On your destination you will find the following data, a DICOMDIR and a Folder that contains all the images.

Name	Date modified	Type
 DICOMDIR	23.07.2014 14:28	File
 GEMS_IMG	23.07.2014 14:28	File folder

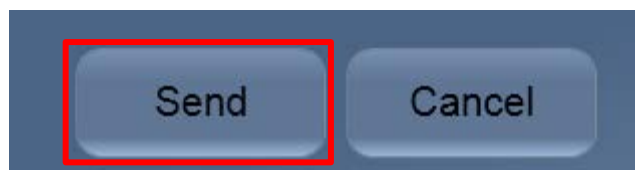
### Store AVI, MPEG or JPEG

Select AVI or JPEG from the File Type List.

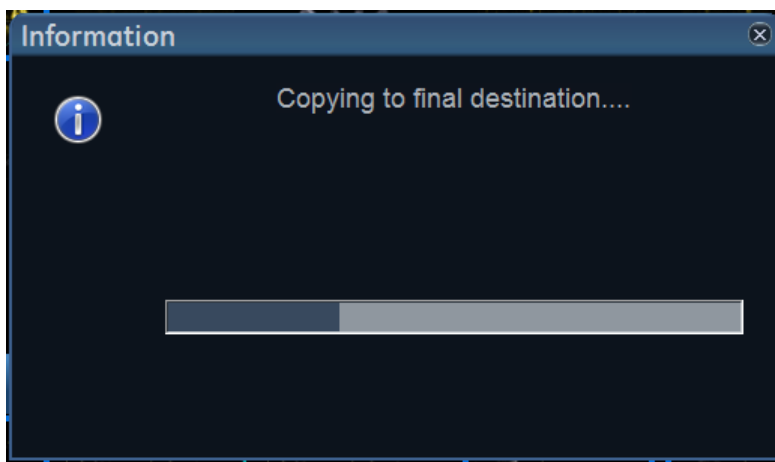
Enter a folder name, where the images should be placed in:



Tap on **Send**:



A message pops up for each image, to show you the copy process:



In the selected destination you will find the created folder which contains the images labelled Image01, Image02.....

