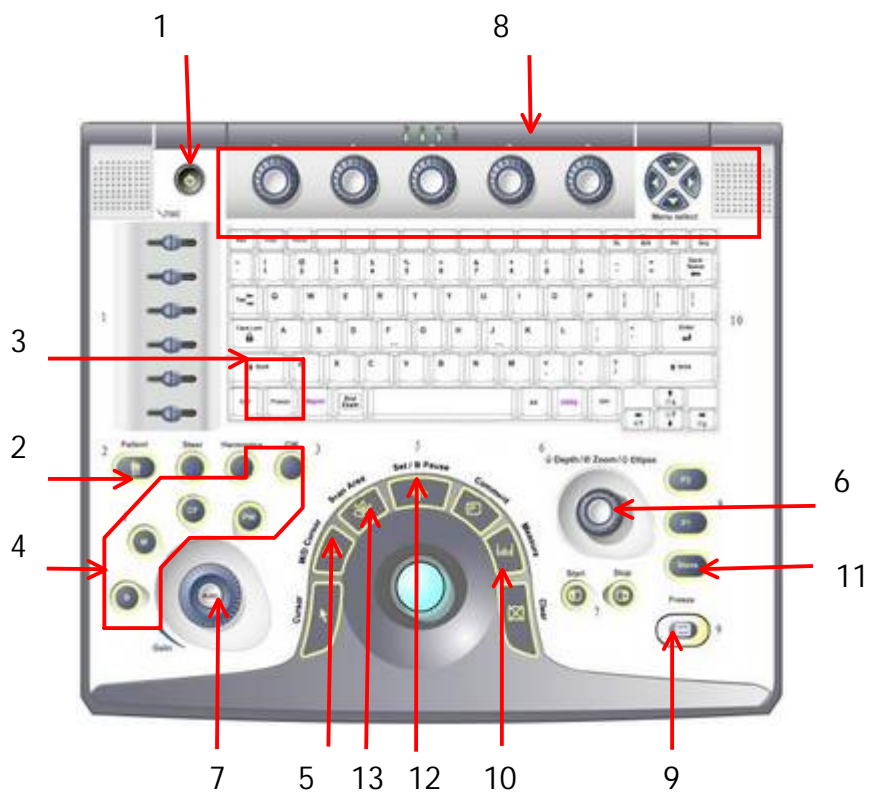


Application News



Basic operation of a Vivid e An overview at a glance



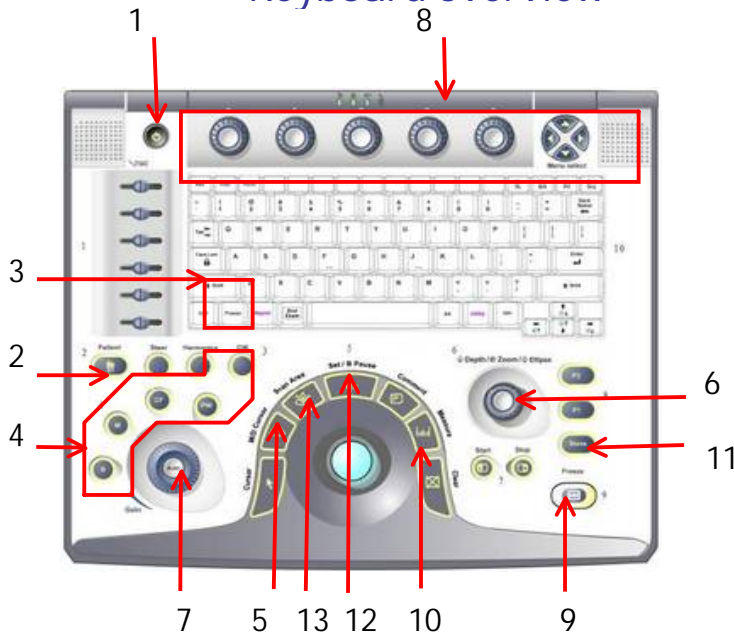
Content

Connecting the probe	4
Keyboard overview	4
Switching on the system	4
Login on into the archive	4
Create a new patient examination	4
Enter the patient data	4
Select the probe	4
Image storage	4
Measurements	4
Finishing the examination	4

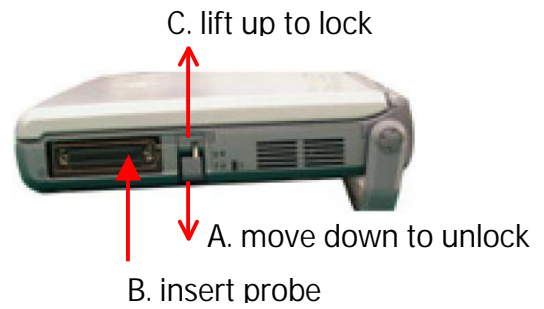
NOTE

This hand out is additional training material.
For more information please refer to the user manual and/or reference manual.

GE Healthcare VividClub Keyboard overview



Connecting the probe



- | | |
|--------------------|-----------------|
| 1. On / Off | 8. Soft keys |
| 2. Patient Archive | 9. Freeze |
| 3. Probe selection | 10. Measure |
| 4. Div. Modalities | 11. Image Store |
| 5. Cursor | 12. Set button |
| 6. Depth | 13. Scan Area |
| 7. Gain | |

Switching on the system: Press the On/Off button (1)

Login on into the archive: Press the Patient button (2). Select the Operator- add the Password- then press Log on

Create a new patient examination: Press the New Patient button on the left side of the screen.

Enter the patient data: Last name, first name, Pat.ID, Birthdate (DOB)
 Press Register if the patient is new OR
 Select the patient from the list- double-click and press New Exam (8)
 Press the Exit button on the left side of the monitor or the B – Mode button (4)

Select the probe: Press the Preset button (3) and choose the preset from the menu

Image optimization

- 2D image Depth (6) –Gain (7) - TGC –Frequency (8) - Focus position (8) – Scan area (13)
- M-Mode Press on M/D Cursor (5) - position the line on the right place- press the M-Mode button (4)
 Gain (7) – Sweep speed (8)
 Press the B-Mode button (4) to go back to normal 2D imaging
- Color flow While in the 2D image press the CF button (4)
 Move the ROI with the trackball – change the ROI size by pressing Scan Area (12) and use
 the trackball – Gain (7)
- Doppler Press on M/D Cursor (5)– position the line on the right place– add PW/CW- Doppler (4)
 Gain (7) – Baseline (8) – Scale (8) - Sweep speed (8)
 Press the B-Mode button (4) to go back to normal 2D imaging

Image storage:

Loop: while the image is running press the image Store button (11)

- EITHER the loop is stored automatically OR
- See the loop running on the screen and decide if it fits. If yes press the Store button (11) again. If not press the Freeze button (9) and start scanning again

Still frame: press the Freeze button (9) to stop the image, scroll with the trackball to select an image and press the Store button (11)

Measurements: Press Freeze (9)– scroll with the trackball if needed- press the button for Measurements (10)

Finishing the examination: Press the Patient button (2) - Press New Exam – agree to store all images if needed