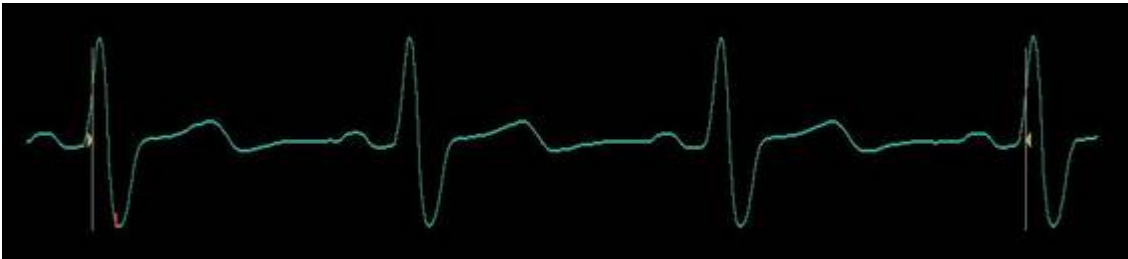


Application News



Optimize your image storage



Content

OPTIMIZE YOUR IMAGE STORAGE.....	2
SET UP PREVIEW LOOP	4
General.....	4
How to setup	4
How to work.....	4
SET UP NUMBER OF HEART CYCLES	5
General.....	5
How to setup	5
Note	5
SET UP TIME BEFORE/AFTER HEART CYCLE	5
General.....	5
Note.....	5
How to setup	6
What will happen.....	6
SET UP TIME WITHOUT ECG.....	6
General.....	6
How to setup	6

NOTE

This hand out is additional training material.
For more information please refer to the user manual and/or reference manual.



Set up preview loop

General

When pressing the Image Store button two scenarios can be addressed:

- Pressing the image store button once the image is stored directly.
- Pressing the image store button the system selects a loop and shows it first on the screen (preview loop). The user can decide now to store it, search for a better loop or remove it.

How to setup

Press the Config (F2) button on the keyboard of the system.

Select the Imaging button on the lower part of the screen.

Then choose the tab for Global settings.

Make a checkmark at: Preview loop before store to get the preview image.

How to work

Checkmark is off

Press the image store button once and the image is stored directly to the archive.

Checkmark is on

Press the image store button. The loop is running on the screen for. Review it.

To store the loop

Press Image store again.

Select another loop

On the rotary knobs you have the possibility to select another loop.

To store the selected loop the image store button needs to be pressed.

Remove the loop

If there is no nice loop for storing press the Freeze button. The system will go back to live scanning without storing an image.



Set up number of heart cycles

General

The number of heart cycles that should be stored by pressing the Image store button can be setup up for each single application/preset separately.

By default the number of heart cycles is set to one.

For different purposes it might be interesting to change this number i.e. when using TVI it's nice to have three heart cycles at once.

How to setup

Select the Probe and the Application that needs to be adjusted.

Press the Config (F2) button on the keyboard of the system.

Select the Imaging button on the lower part of the screen.

Select the Tab for Application.

In the upper left corner the number of heart cycles can be chosen from the list.

To store this setting press the Save button in the lower right corner.

Press Config (F2) again to exit the configuration page (settings are automatically stored).

Note

If a factory preset was used it is necessary to enter a name for this preset. A new window opens- enter a name and press ok.

After this go to the next Tab called Application Menu.

The new preset will be found in the lower part of the applications list. By selecting the preset and using the arrow keys it can be moved to another position in the list. When pressing the default button as well, this will be the preset of choice for this probe.

Set up time before/after heart cycle

General

The system is detecting the beginning of R-waves. This will be used for start and end of a heart cycle.

Additionally to this some ms before and after the end of the selected cycle can be stored automatically.

Note

For TVI data, AFI and 2D Strain analysis it is recommended to set up the times to 100 ms before and after. This is to make sure that all frames within a complete heart cycle can be analyzed.



How to setup

Press Config (F2).

Select the Imaging button on the lower part of the screen.

Then choose the tab for Global settings.

There are two possibilities to set up time frames:

Time before / after each heart cycle.

Change the default setting and enter 100 for both (before and after).

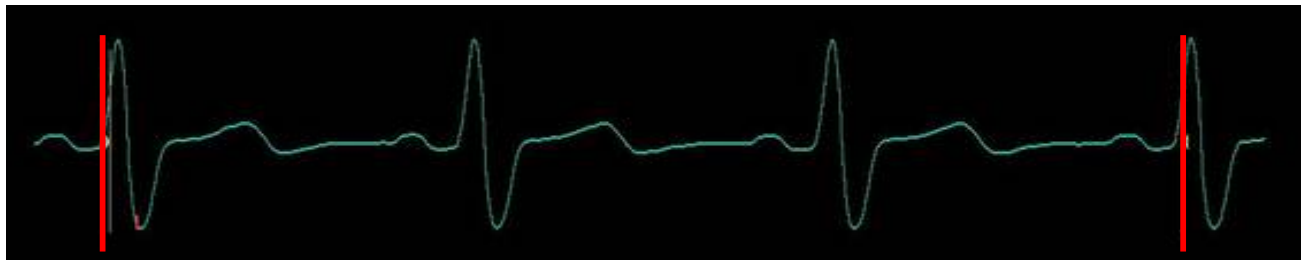
Press Config (F2) again to exit the configuration page (settings are automatically stored).

What will happen

After this set up the following will happen.

When pressing the image store button the system will show the cineloop from R- wave to R-wave. It is not showing the additional ms this is to make the image running smooth for the user.

When the image is recalled it will also run from R-wave to R-wave. On the ECG it can be seen that there are additional frames before and after.



Set up time without ECG

General

If there is an ECG the system will always use the ecg to adjust the cineloop that should be stored (depending on the number of heart cycles that are set up for this preset. See above).

If there is no ECG the system will take a predefined time period to get the cineloop.

In fact this means: As long as there is no ECG the system will take a specific time frame – when there is a ECG it is according to the number of heart cycles.

How to setup

Press Config (F2).

Select the Imaging button on the lower part of the screen.

Then choose the tab for Global settings.

In the field for imaging storing without ECG the time in ms can be entered freely.

