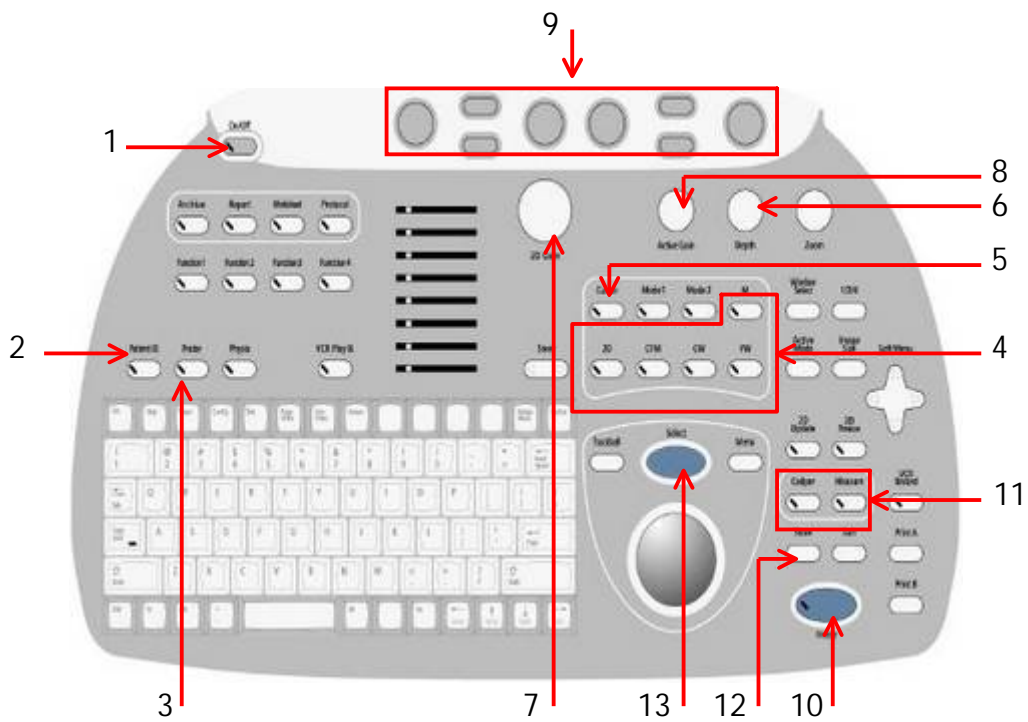


# Application News



## Basic operation of a Vivid 3 An overview at a glance



# Content

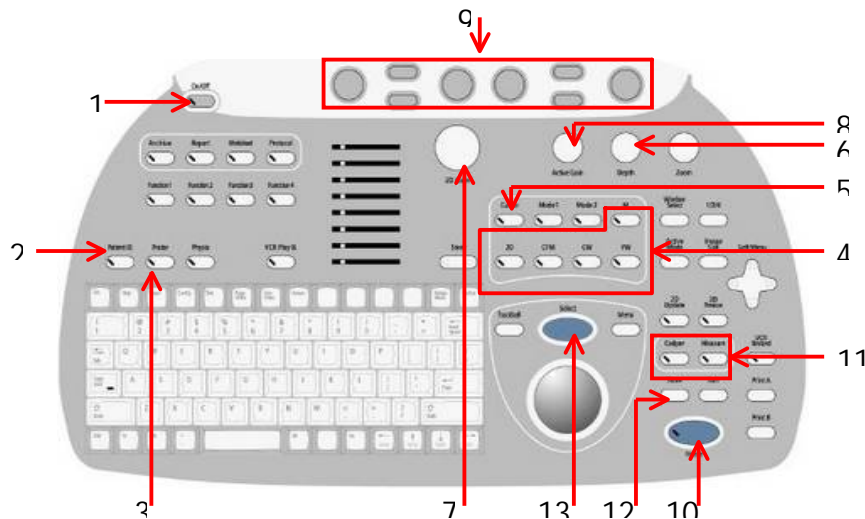
Keyboard overview	4
Switching on the system	4
Start a new examination	4
Select the probe	4
Image optimization	4
Image storage	4
Measurements	4

### NOTE

This hand out is additional training material.  
For more information please refer to the user manual and/or reference manual.



Keyboard overview



1. On / Off
2. New / end examination
3. Probe selection
4. Div. Modalities
5. Cursor
6. Depth
7. 2D Gain
8. Active Mode Gain
9. Soft keys
10. Freeze
11. Measurement
12. Image store
13. Set button

**Switching on the system:** Press the On/Off button (1) until you see the illumination of the keyboard

**Start a new examination:** Press the Patient ID (2) button

- The patient is new: select Start new Patient - enter the patient data - press Begin Exam (9) OR
- Patient already exists: select Search - enter searchcriteria - select patient from the list - press New Exam (9) - review Patient data and press Ok (9)

**Select the probe:** Press the Probe (3) button– on the screen: select the probe with a preset of need

**Image optimization:**

- 2D image Depth (6) –Gain (7) - TGC –Sector width (9) –Frequency (9) - Focus position (9)
- M-Mode press Cursor (5) - position the line on the right place - press the M-Mode (4) button  
Gain (8) - Horizontal sweep (9)  
Press the 2D (4) button to go back to normal 2D imaging
- Color flow while in the 2D press the CFM (4) button  
move ROI with the trackball – change ROI size by pressing Select (13) and use trackball Gain (8)
- Doppler press Cursor (5)– position the line on the right place – add PW/CW- Doppler (4)  
Gain (8) – Baseline (9) – Scale (9) - Horiz. Sweep (9)  
Press the 2D button (4) to go back to normal 2D imaging

**Image storage**

- Loop while the image is running press the image Store (12) button  
EITHER the loop is stored automatically OR  
see the loop running on the screen and decide if it fits. If yes press the Store (12) button again. If not press the Freeze (10) button and start scanning again
- Still frame press the Freeze (10) button to stop the image, scroll with the trackball to select an image and press the Store (12) button

**Measurements:** press the Freeze (10) button– scroll with the trackball if needed - press Caliper (11) for basic measurements or use Measurements (11) for the packages