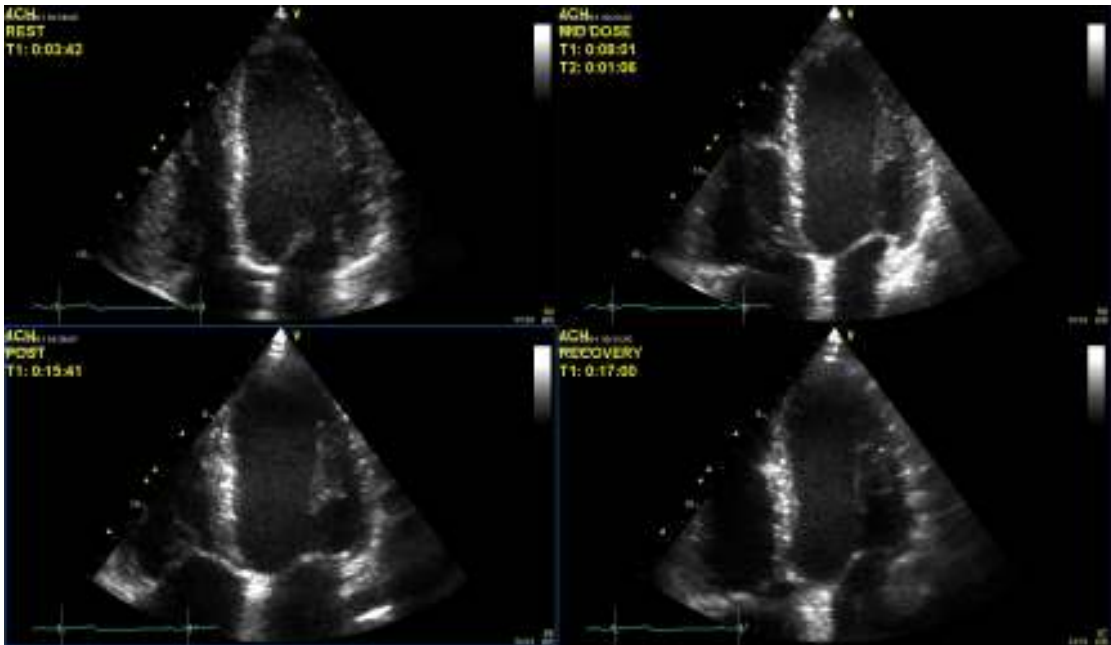


# Application News



# Stressecho for Vivid 3 and Vivid 4



## Content

<b>CREATE YOUR OWN STRESS TEMPLATE .....</b>	<b>4</b>
Select a template.....	4
Factory templates .....	4
Define the order of the views you want to acquire .....	4
Define the number of levels for the protocol .....	4
Define a new group .....	4
Change an existing group.....	5
Delete a group.....	5
Define the action at the end of the stress echo.....	5
Save new template .....	5
<b>ACQUIRE A STRESS ECHO .....</b>	<b>6</b>
Start the protocol.....	6
Smart Stress (Vivid 4 only) .....	6
Start the stress echo.....	6
Image analysis .....	6
End the stress echo protocol .....	7

## Create your own stress template

Words marked in **red** are hard keys on the control panel.

Words marked in **blue** are the soft keys gray (Vivid 3) / violet (Vivid 4).

The Function is described on the monitor.

Create a new patient examination

### Select a template

Press the **Protocol** button on the upper left side of the keyboard (the button is together with the archive, report and worksheet buttons).

### Factory templates

You see first the templates that are already inside from the factory.

The numbers have the following meaning.

The first number tells you how many Levels the stress templates contains.

The second number gives the number of views that needs to be acquired.

I.E. Bicycle 3x8 = template with 3 views and 8 levels

Select the template you want to adjust.

### Define the order of the views you want to acquire

To define the order of the views you need to move the mouse cursor on the desired view (i.e.

PLAX). **Click** on this and the system will show the list of all possibilities. **Scroll** with the blue

selection on the correct view and enter with the **select** button.

PLAX = parasternal long axis

SAX-MV = parasternal short axis on mitral valve

4CH / 2CH = 4 / 2 Chamber view

APLAX = apical long axis / 3-chamber view

SAX-PM = parasternal short axis on papillary muscle

### Define the number of levels for the protocol

To define the number of levels you just rotate the soft menu button for **select level**.

Counterclockwise you reduce the number of levels. Clockwise you add more levels.

To change the name of the level, click on the existing name and then change it to your needs.

### Define a new group

Select one group that is named "User".

Make a **double click** on the name (is now colorized).

Then enter a **new name** for this group and press **enter** to store this name.

**Select** 4 images in the template that should build one group (selected images will get a blue frame).  
Scroll with the mouse cursor now on the group name, then press the **menu** button.  
Select **Update** from the list and the group is now defined with the new name and the images.

### Change an existing group

Make a double click on the name of the group you want to change.  
Add the name for this group and press **enter** to store the changes.  
Select 4 images in the template (the images get a blue frame).  
Scroll with the mouse cursor now on the group name, then press the **menu** button.  
Select **Update** from the list and the group is now defined with the new name and the images.

### Delete a group

Move with the mouse cursor onto the group.  
Press the **menu** button.  
Select **empty** from the list.  
The images for this group will be now deleted, but the name still persists.

### Define the action at the end of the stress echo

Select on each level the last image.  
Press the **menu** button.  
Please check in the list that there is no checkmark on **enter scoring**. If there is a checkmark please remove it.  
Only in the very last image of the template there you can activate the checkmark for **enter scoring**, then the analysis will start automatically at the end of the stress echo.

### Save new template

After you have done all your changes you press the soft menu button for **save new template**.  
Enter the name you want to add for this template and press **Ok** to store.  
The new template is now available in the list of stress templates below the factory templates.

## Acquire a stress echo

Words marked in **red** are hard keys on the control panel.

Words marked in **blue** are the soft keys gray (Vivid 3) / violet (Vivid 4).  
The Function is described on the monitor.

### Start the protocol

Press the **Protocol** button on the upper left side of the keyboard (the button is together with the archive, report and worksheet buttons).  
Select the needed template from the list.

### Smart Stress (Vivid 4 only)

**SmartStress** (upper left button)

This feature gives you the opportunity to get the same adjusting from the rest level in the following stress levels. The system will remember for each view the adjusting and translate them to the following stress levels.

As default the smart stress option is on. You can remove the option by pressing the soft menu button.

### Start the stress echo

To start the acquisition press the **2D** button.

On the left side you always have the template for orientation.

To store a loop press the **store** button.

The last loop from R-wave to R-wave will be displayed on the monitor.

You can use the soft menu buttons to choose another loop with the **previous** or **next** button.

Press the **store** button again to finally store the selected image in the template.

Store one image after the other until you have finished your level.

If you want to reject one level move with the mouse cursor on the level you want to store the next images and press the **select** button to activate the new selection.

### Image analysis

Once the last image in the template is stored the system automatically jumps to the image selection window.

If this doesn't work stop the image with the **freeze** button. Then press **template**.

Click on max. 4 images you want to compare together then press **analysis** to get the quad view for the comparison.

Press **template** to go back to the overview, select the next 4 images and then **analysis** again.

### End the stress echo protocol

To end the stress echo protocol press the **protocol** button. Now you are back in the normal scanning mode.