

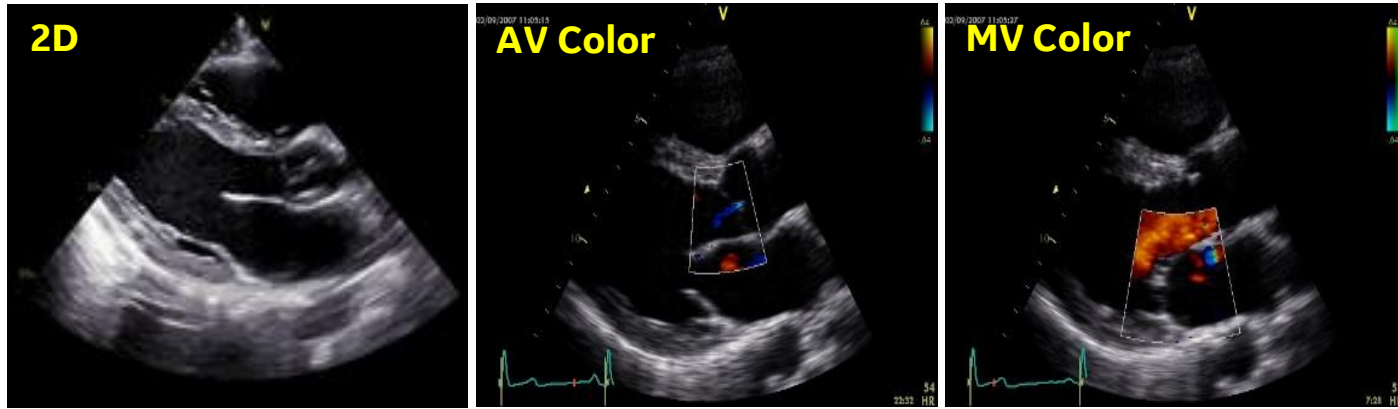
# GE VIVID

## 심장초음파 FAQ 시리즈

### 2 인증의 시험에서는 어떤 View를 획득하게 되나요?

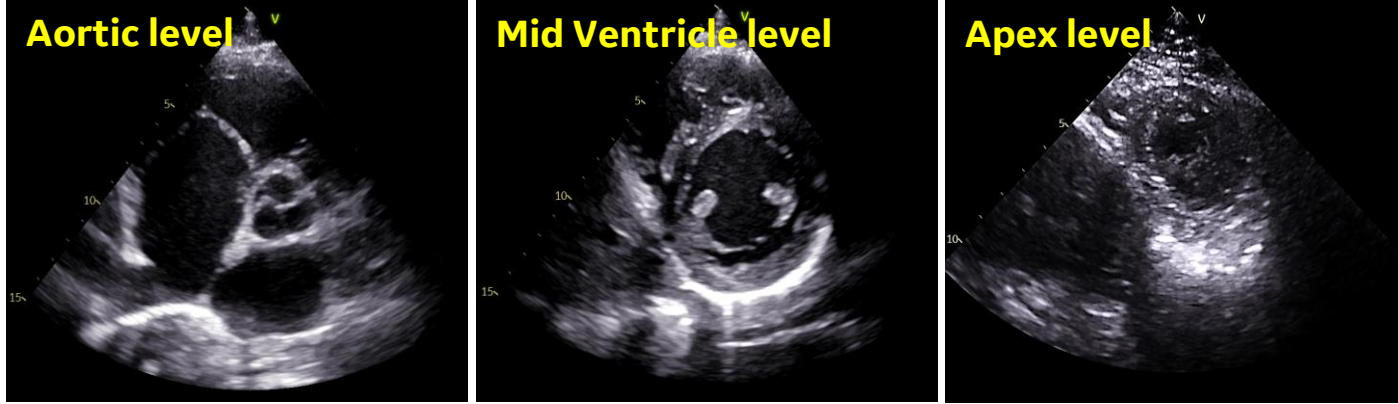
• 검사 전 확인 사항 : 환자 정보, 환자 Position, 초음파장비 Check (gain, TGC, ECG 상태 등)

#### 1. Parasternal Long Axis View | 2D + CFM



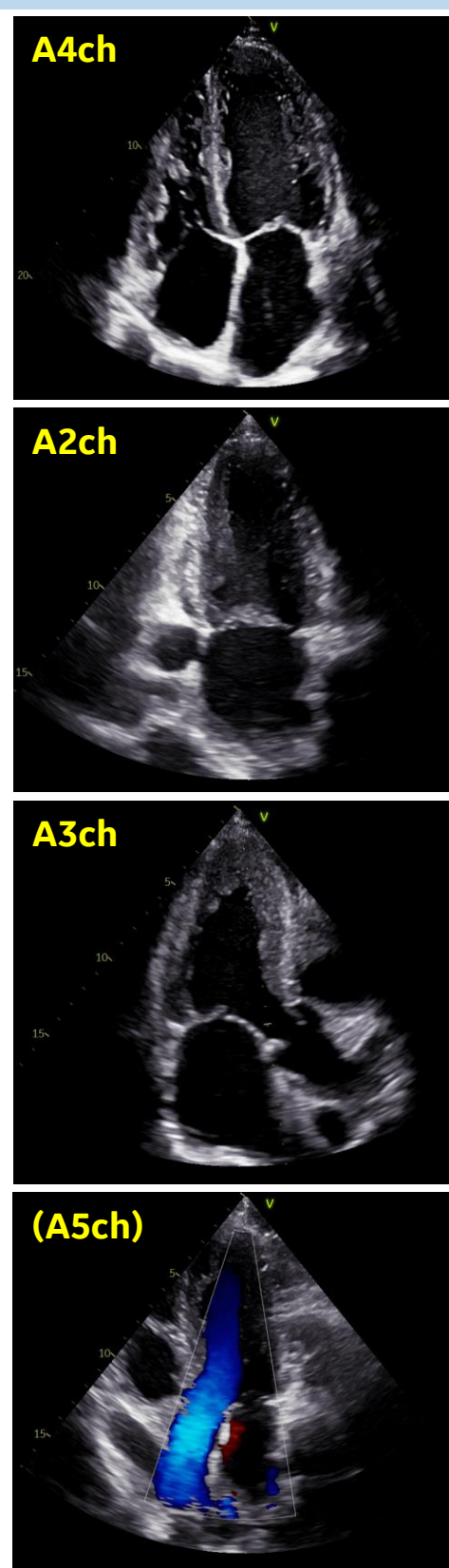
- » **Check Point**
- 1) Chamber size
  - 2) Wall motion (Antero-septal / Infero-lateral)
  - 3) LVH
  - 4) Valve morphology (Thickness / Stenosis)
  - 5) Pericardial effusion
  - 6) Pleural effusion
  - 7) MV Prolapse 여부 확인
  - 8) MR, MS, AR, AS

#### 2. Parasternal Short Axis View



- » **Check Point**
- 1) Chamber size
  - 2) Valve morphology (Thickness / Stenosis)
  - 3) LAA Thrombi 유무
  - 4) PA Embolism 유무
  - 5) Congenital disease (ASD / VSD / Bicuspid)
- » **Check Point**
- 1) Wall motion ; LV Mid level
  - 2) Chamber size
  - 3) Pericardial effusion 여부
  - 4) M-mode (LV EF)
- » **Check Point**
- 1) Wall motion ; LV Apex Level (True Apex까지 평가!)
  - 2) Aneurysm 여부
  - 3) Pericardial effusion 여부

#### 3. Apical View | A4ch, A2ch, A3ch, (or A5ch) 2D + CFM



- » **Check Point**
- 1) Wall motion (Infero-septal / Antero-lateral)
  - 2) MV / TV morphology
  - 3) Chamber size (LV / RV / LA / RA)
  - 4) LV EF (Modified Simpson method)
- » **Check Point**
- 1) Wall motion
  - 2) MV prolapse (Anterior / Inferior)
  - 3) Chamber size (LV / LA)
  - 4) LAA thrombi 여부
  - 5) MR flow 방향
  - 6) MR 발생 leaflet 확인
- » **Check Point**
- 1) Wall motion (Antero-septal / Infero-lateral)
  - 2) LVOT / AV 관찰
  - 3) LV obstruction 여부 확인
- » **Check Point**
- 1) AV morphology
  - 2) AV flow (AS / AR)
  - 3) LVOT Doppler (PW)
  - 4) AV Doppler (CW)

#### 4. Measurement | MV Inflow, AV Vmax

» A4ch view 2D + CFM + PW

- 1) E Velocity
- 2) A Velocity
- 3) DT 측정

» A5ch view 2D + CFM + CW (or A3ch view)

- 1) AV Vmax 측정