

Basic operation of a Vivid 7

An overview at a glance

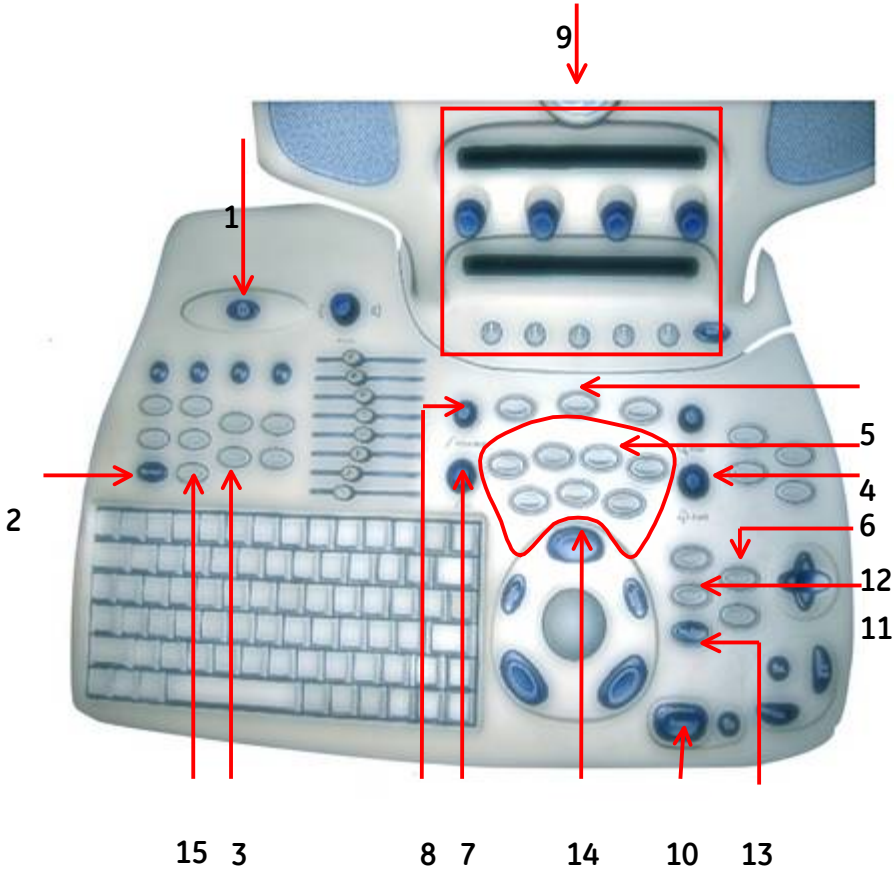


Table of Contents

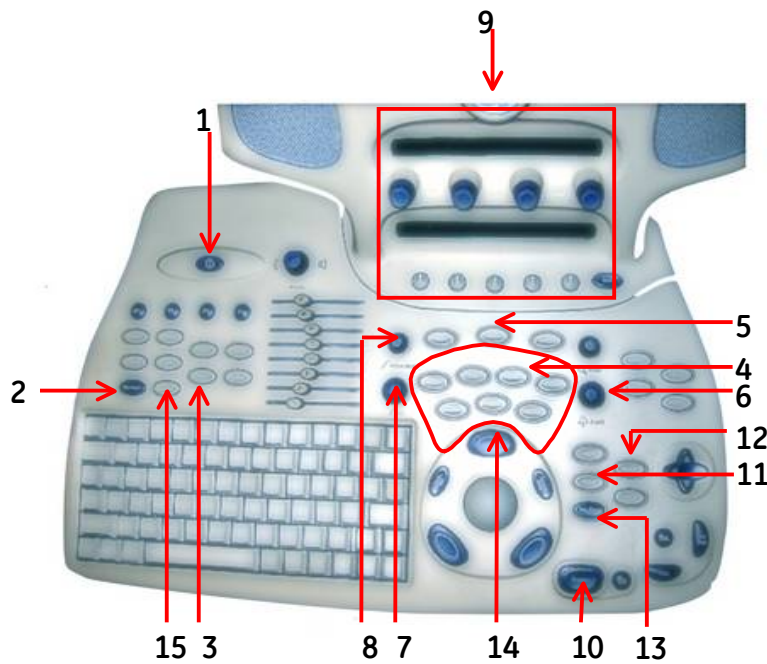
Keyboard overview	3
Switching on the system	3
Login on into the archive	3
Create a new patient examination	3
Select the probe	3
Image optimization	3
Image storage	3
Measurements	3
Finishing the examination	3

NOTE

This hand out is additional training material.
For more information please refer to the user manual and/or reference manual.



Keyboard overview



1. On / Off
2. New examination
3. Probe selection
4. Div. Modalities
5. Cursor
6. Depth
7. 2D Gain
8. Active Mode Gain
9. Soft keys
10. Freeze
11. Caliper
12. Measurement
13. Image store
14. Set button
15. Archive

Switching on the system: Press the **On/Off** button (1)

Login on into the archive: Press the **New Exam** button (2). Select the **Operator**-add the **Password**-then press **Log on**

Create a new patient examination: Enter the patient data: **Last name, first name, Pat.ID, Birthdate**
Press **Create Patient (9)** if the patient is new **OR**
Select the patient from the list and press **Select Patient (9)**
If the Patient information screen appears press **Begin Exam (8)** again

Select the probe: Press the **Probe** button (3), choose the probe and take the right preset from the list

Image optimization

2D image

Depth (6)- 2D Gain (7)- TGC- Sector width (9)- Frequency (9)- Focus position (9)

M-Mode

Press the **Cursor** button (5)- position the line on the right place- press the **M-Mode** button (4)

Active Mode Gain (8) - Horizontal sweep (9)

Press the **2D** button (4) to go back to normal 2D imaging

Color flow

While in the 2D press the **CFM** button (4)

Move the ROI with the trackball- change the ROI size by pressing **Set (14)** and use the trackball - **Active Mode Gain (8)**

Doppler

Press the **Cursor (5)** button- position the line on the right place- add **PW/CW- Doppler (4)**

Active Mode Gain (8)- Baseline (9)- Scale (9)- Horiz. Sweep (9)

Press the **2D** button (4) to go back to normal 2D imaging

Image storage:

Loop: while the image is running press the **Image store** button (13)

- EITHER the loop is stored automatically **OR**
- see the loop running on the screen and decide if it fits. If yes press the **Image store** button (13) again. If not press the **Freeze** button (10) and start scanning again

Still frame: press the **Freeze** button (10) to stop the image, scroll with the trackball to select an image and press the **Image store** button (13)

Measurements: Press the **Freeze** button (10)- scroll with the trackball if needed- press **Caliper (11)** for basic measurements or the **Measurements** button (12) for measurement packages

Finishing the examination: Press the **Archive** button (15) - select **End examination (9)**