

Basic operation of a Vivid e

An overview at a glance

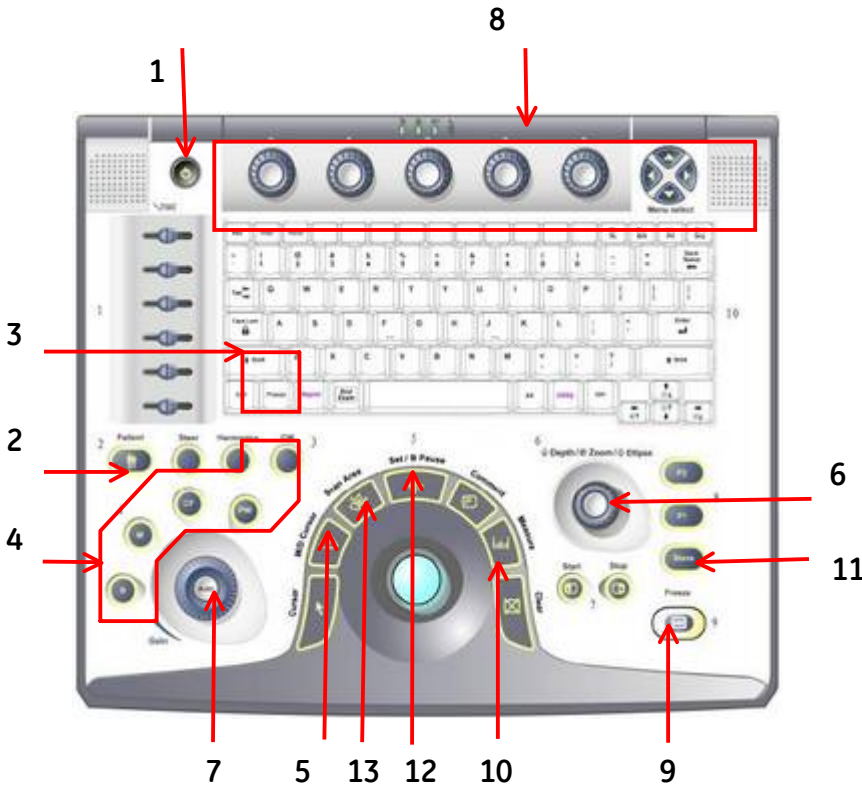


Table of Contents

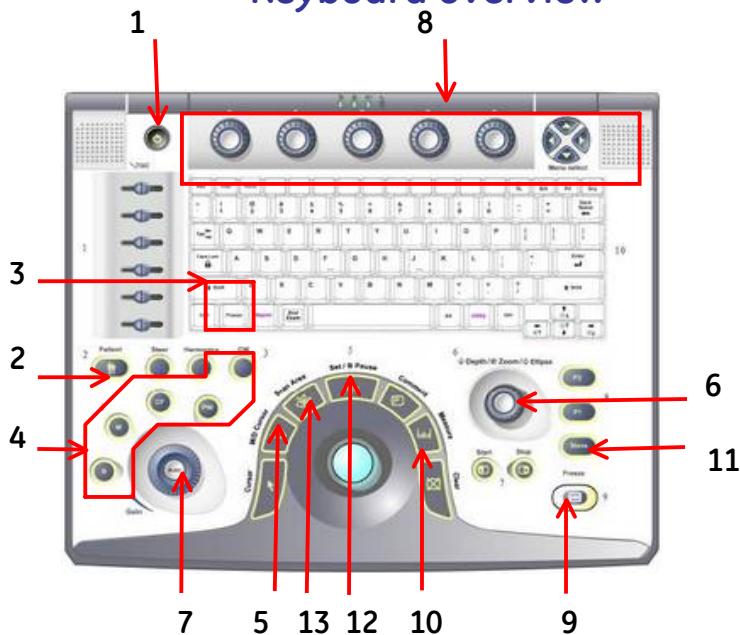
Connecting the probe	3
Keyboard overview	3
Switching on the system	3
Login on into the archive	3
Create a new patient examination	3
Enter the patient data	3
Select the probe	3
Image storage	3
Measurements	3
Finishing the examination	3

NOTE

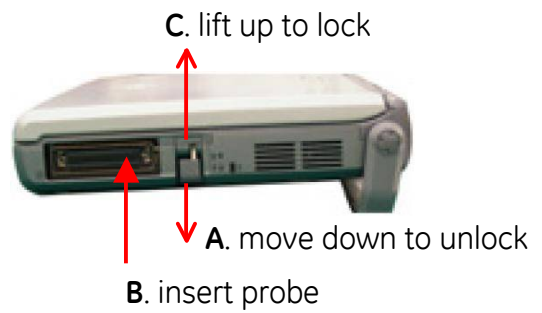
This hand out is additional training material.
For more information please refer to the user manual and/or reference manual.



GE Healthcare
VividClub **Keyboard overview**



Connecting the probe



- | | |
|--------------------|-----------------|
| 1. On / Off | 8. Soft keys |
| 2. Patient Archive | 9. Freeze |
| 3. Probe selection | 10. Measure |
| 4. Div. Modalities | 11. Image Store |
| 5. Cursor | 12. Set button |
| 6. Depth | 13. Scan Area |
| 7. Gain | |

Switching on the system: Press the **On/Off** button (1)

Login on into the archive: Press the **Patient** button (2). Select the **Operator**- add the **Password**- then press **Log on**

Create a new patient examination: Press the **New Patient** button on the left side of the screen.

Enter the patient data: **Last name, first name, Pat.ID, Birthdate (DOB)**

Press **Register** if the patient is new **OR**

Select the patient from the list- double-click and press **New Exam (8)**

Press the **Exit** button on the left side of the monitor or the **B - Mode** button (4)

Select the probe: Press the **Preset** button (3) and choose the preset from the menu

Image optimization

2D image

Depth (6) -Gain (7) - TGC -Frequency (8) - Focus position (8) - Scan area (13)

M-Mode

Press on **M/D Cursor (5)** - position the line on the right place- press the **M-Mode** button (4)

Gain (7) - Sweep speed (8)

Press the **B-Mode** button (4) to go back to normal 2D imaging

Color flow

While in the 2D image press the **CF** button (4)

Move the ROI with the trackball - change the ROI size by pressing **Scan Area (12)** and use the trackball - **Gain (7)**

Doppler

Press on **M/D Cursor (5)**- position the line on the right place- add **PW/CW- Doppler (4)**

Gain (7) - Baseline (8) - Scale (8) - Sweep speed (8)

Press the **B-Mode** button (4) to go back to normal 2D imaging

Image storage:

Loop: while the image is running press the image **Store** button (11)

- EITHER the loop is stored automatically **OR**
- See the loop running on the screen and decide if it fits. If yes press the **Store** button (11) again. If not press the **Freeze** button (9) and start scanning again

Still frame: press the **Freeze** button (9) to stop the image, scroll with the trackball to select an image and press the **Store** button (11)

Measurements: Press **Freeze (9)**- scroll with the trackball if needed- press the button for **Measurements (10)**

Finishing the examination: Press the **Patient** button (2) - Press **New Exam** - agree to store all images if needed