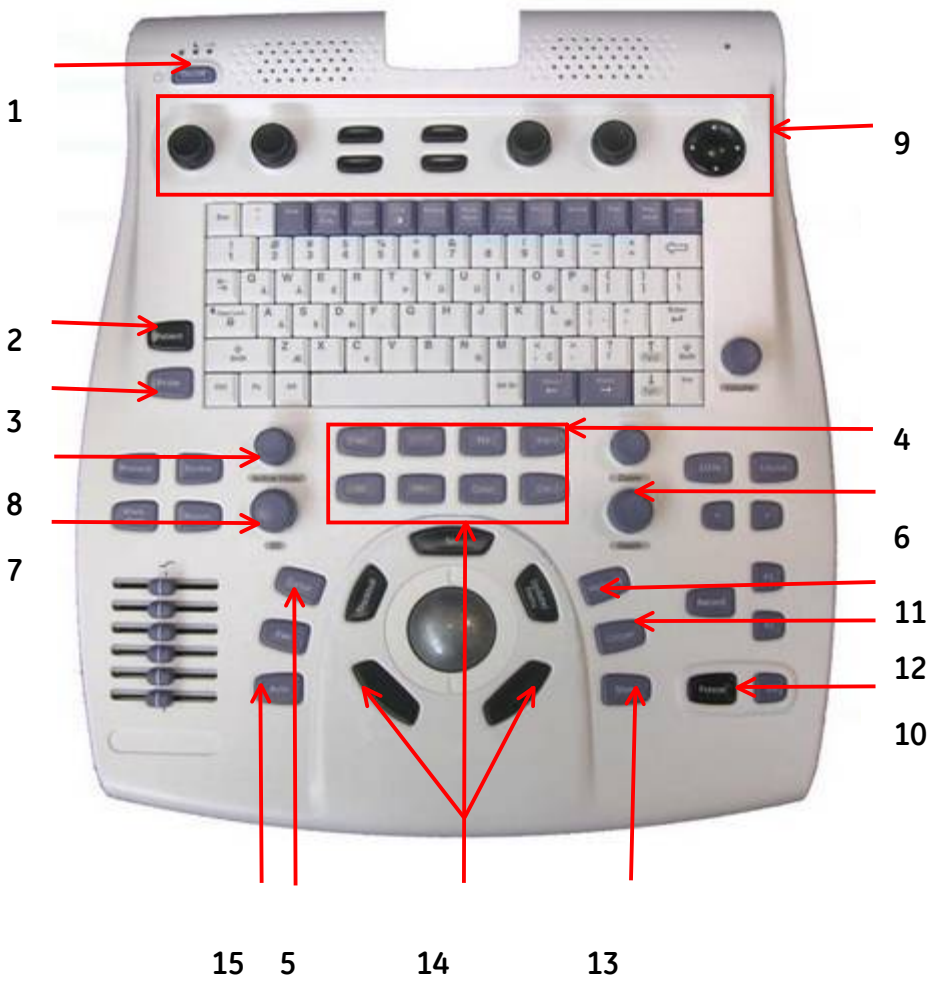


# Basic operation of a Vivid S5

## An overview at a glance



## Table of Contents

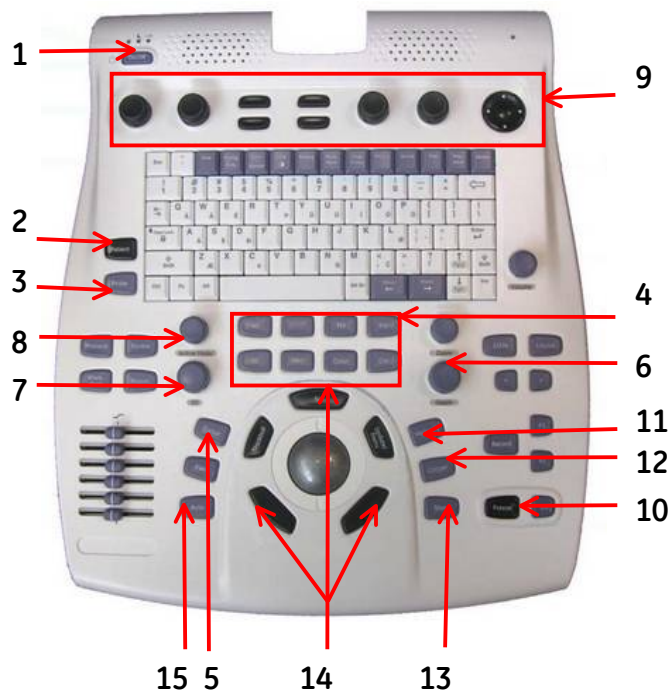
Keyboard overview	3
Switching on the system	3
Login on into the archive	3
Create a new patient examination	3
Enter the patient data	3
Select the probe	3
Image storage	3
Measurements	3
Finishing the examination	3

### NOTE

This hand out is additional training material.  
For more information please refer to the user manual and/or reference manual.



# GE Healthcare VividClub Keyboard overview



1. On / Off
2. Archive
3. Probe selection
4. Div. Modalities
5. Cursor
6. Depth
7. 2D Gain
8. Active Mode Gain
9. Soft keys
10. Freeze
11. Measurement
12. Calliper
13. Image store
14. Set button
15. Auto (automatic optimization for 2D and Doppler)

**Switching on the system:** Press the **On/Off** button (1) until you see the illumination of the keyboard

**Login on into the archive:** Press the **Patient** button (2). Select the **Operator**- add the **Password**- then press **Log on**

**Create a new patient examination:** Select **Create New Patient / New Exam** from the list

**Enter the patient data:** **Last name, first name, Pat.ID, Birthdate**

Press **Create Patient (8)** if the patient is new **OR**

Select the patient from the list and press **Select Patient (8)**

If the Patient information screen appears on the monitor press **Begin Exam (8)**

**Select the probe:**

Press the **Probe** button (3)- click on the probe name and choose the preset from the list

**Image optimization**

2D image

**Depth (6) -Gain (7) - TGC -Sector width (9) -Frequency (9) - Focus position (9) - Auto (15)**

M-Mode

Press the **Cursor** button (5) - position the line on the right place- press the **M-Mode** button (4)

**Gain (8) - Horizontal sweep (9)**

Press the **2D** button (4) to go back to normal 2D imaging

Color flow

While in the 2D press the **CFM** button (4)

Move the ROI with the trackball - change the ROI size by pressing **Set (14)** and use the trackball - **Gain (8)**

Doppler

Press the **Cursor** button (5)- position the line on the right place- add **PW/CW- Doppler (4)**

**Gain (8) - Baseline (9) - Scale (9) - Horiz. Sweep (9) - Auto (15)**

Press the **2D** button (4) to go back to normal 2D imaging

**Image storage:**

Loop: while the image is running press the image **Store** button (13)

- EITHER the loop is stored automatically **OR**
- See the loop running on the screen and decide if it fits. If yes press the **Store** button (11) again. If not press the **Freeze** button (10) and start scanning again

Still frame: press the **Freeze** button (10) to stop the image, scroll with the trackball to select an image and press the **Store** button (13)

**Measurements:** Press the **Freeze** button (10)- scroll with the trackball if needed- press **Calliper (12)** for basic measurements or the **Measurements** button (11) for measurement packages

**Finishing the examination:** Press the **Patient** button (2) - Select **End Examination** from the list