

# 4D Navigation on Vivid\* E9 absolute or relative\*\* and EchoPAC\*

\*Trademark of General Electric company

\*\*Relative Navigation available on Vivid E9 BT 12 M4 SW and above



imagination at work

DOC #1302316

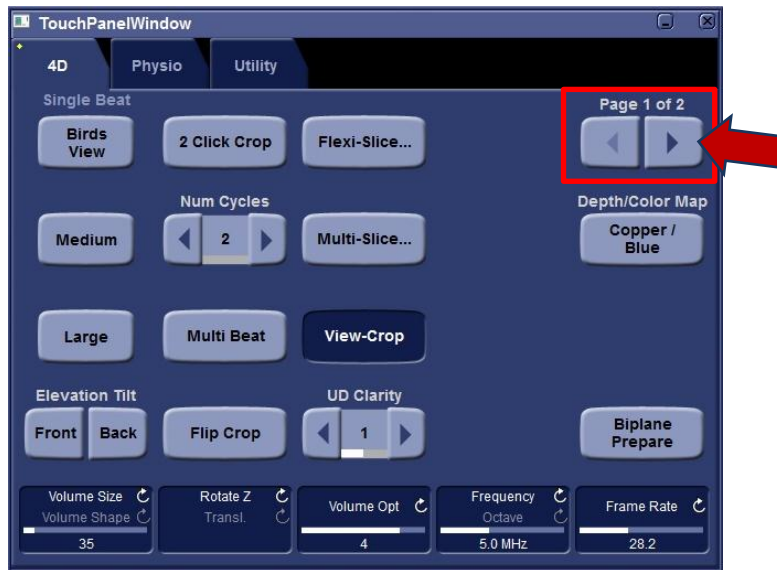
Marion Tschernich / Feb 2013

# Navigation on Vivid E9

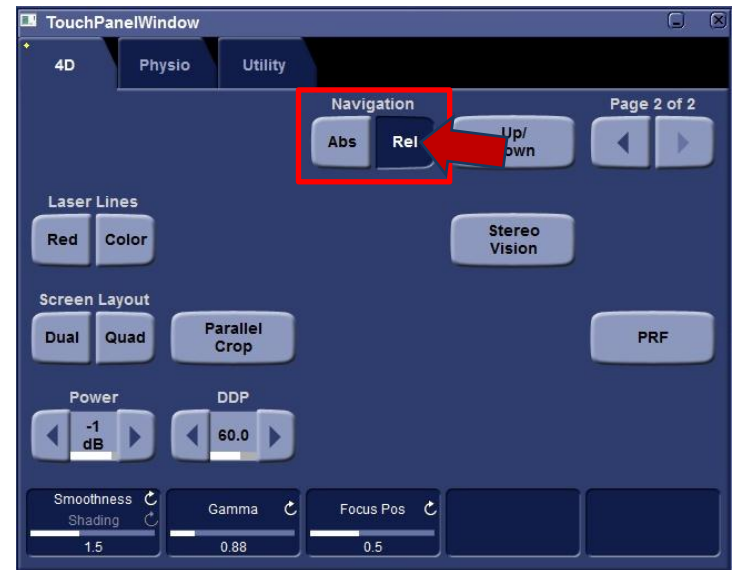
## Relative navigation mode

Relative navigation available on Vivid E9 BT 12 M4 SW and above

Touchpanel Page 1: Move to page 2



Touchpanel Page 2: Activate Rel

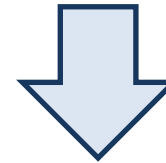
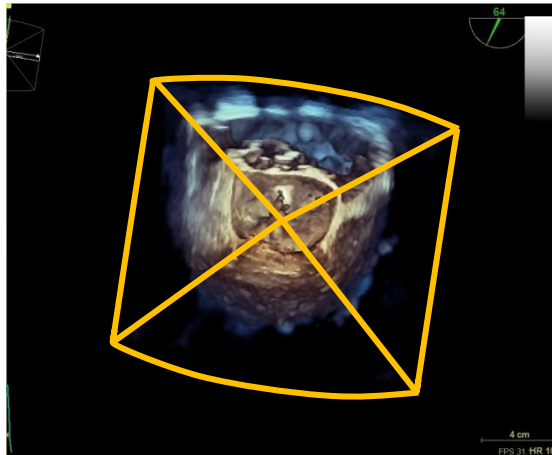


For 6VT-D probe Rel is the default for factory presets  
User presets can be configured with either Abs or Rel

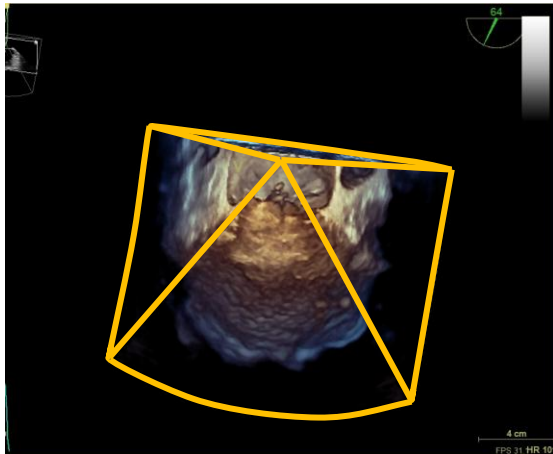
# Navigation on Vivid E9 - relative up/down

Trackball function: **Rot +**

Trackball movement



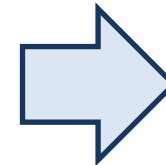
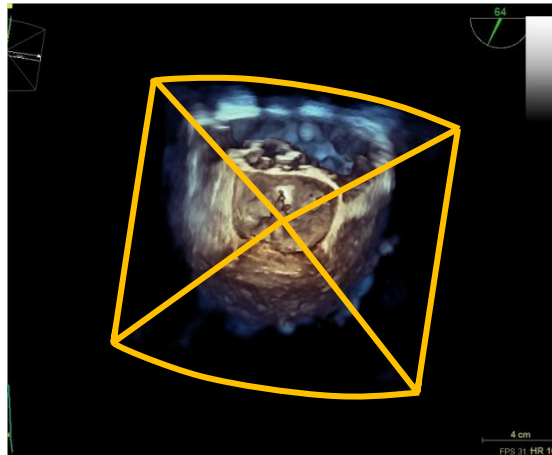
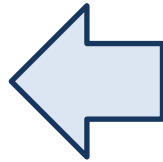
Trackball movement



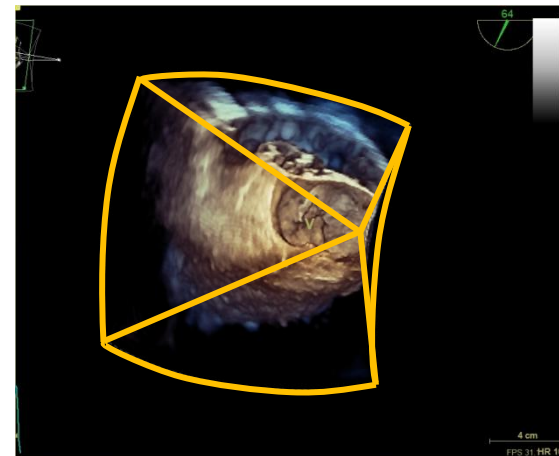
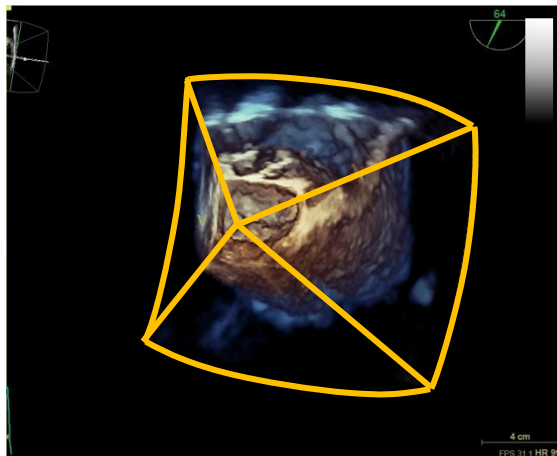
# Navigation on Vivid E9 - relative Tilt left/right

Trackball function: **Rot +**

Trackball movement

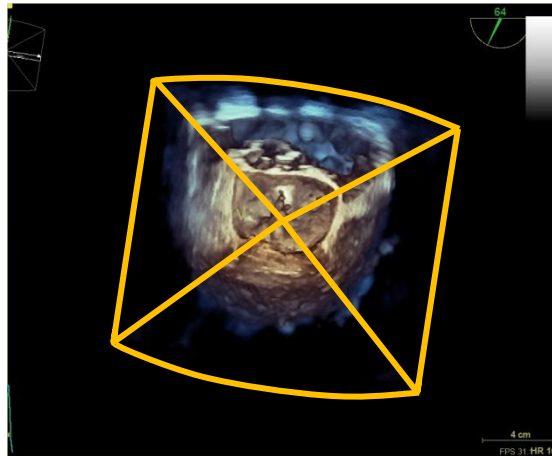


Trackball movement



# Navigation on Vivid E9 - relative clockwise/counterclockwise

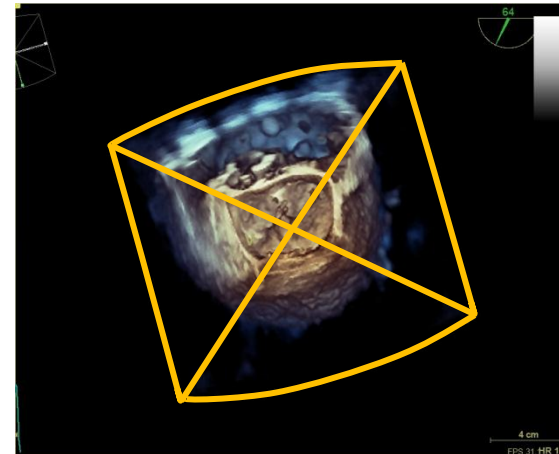
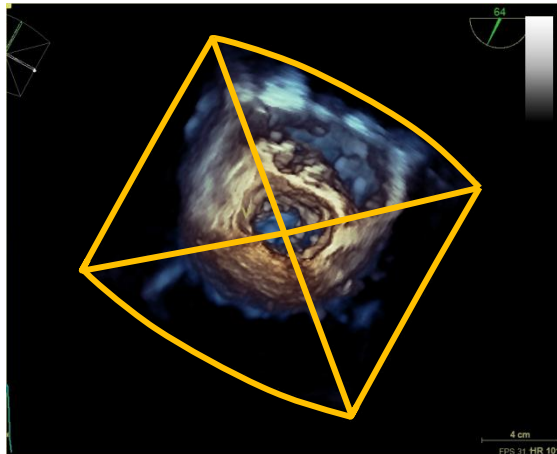
Rotational knob:



Rotational knob



Rotational knob



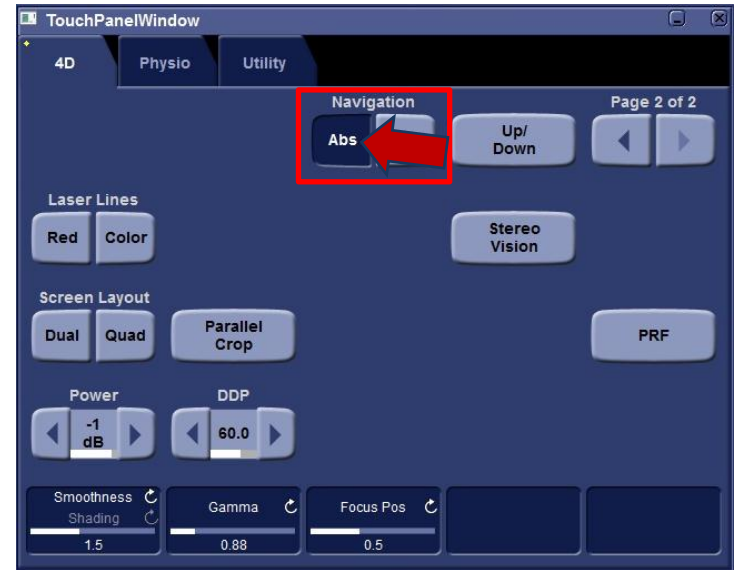
# Navigation on Vivid E9

## Absolute navigation mode

Touchpanel Page 1: Move to page 2



Touchpanel Page 2: Activate Rel

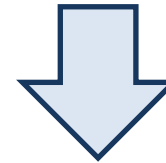
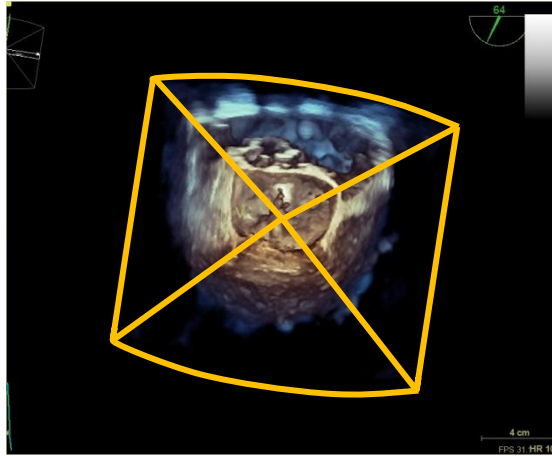


For 4V-D probe Abs is the default for factory presets  
User presets can be configured with either Abs or Rel

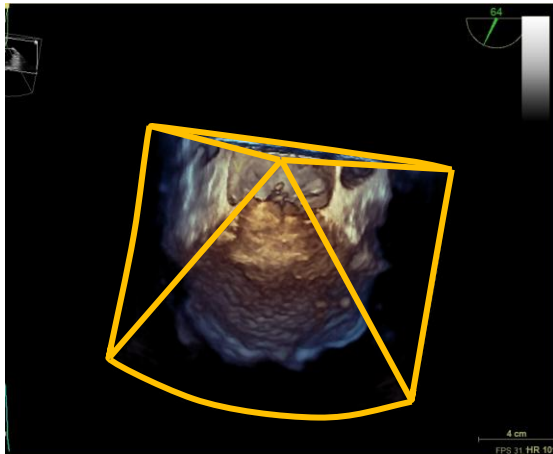
# Navigation on Vivid E9 - absolute up/down

Trackball function: **Rot +**

Trackball movement



Trackball movement

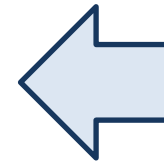
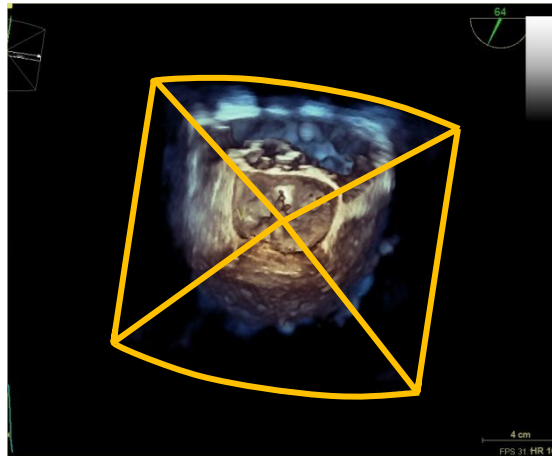
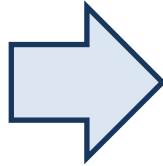




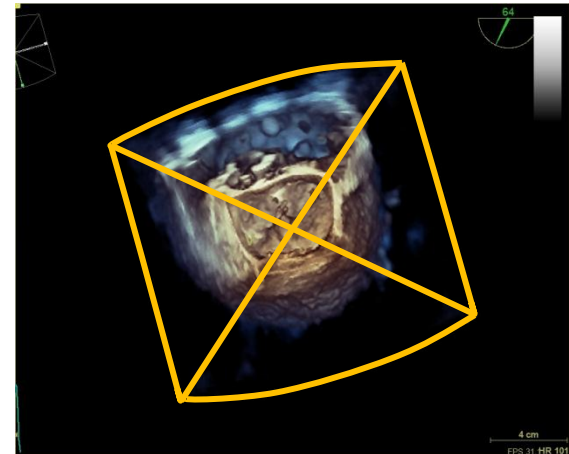
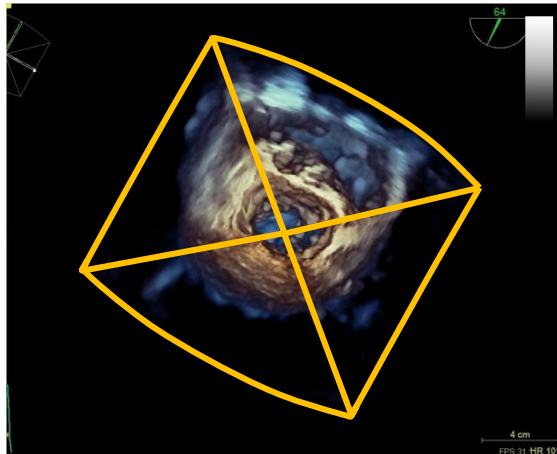
# Navigation on Vivid E9 – absolute clockwise/counterclockwise

Trackball function: **Rot +**

Trackball movement



Trackball movement




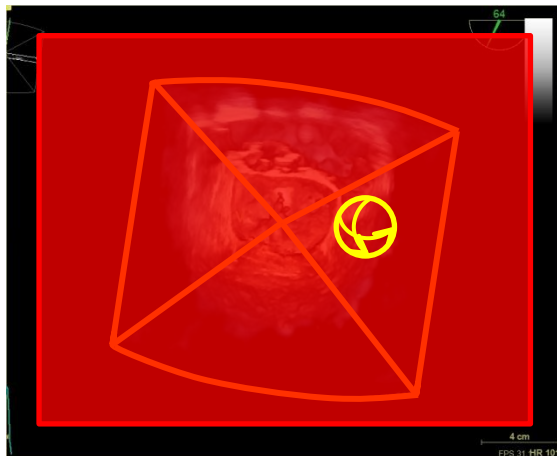


# Navigation on EchoPAC

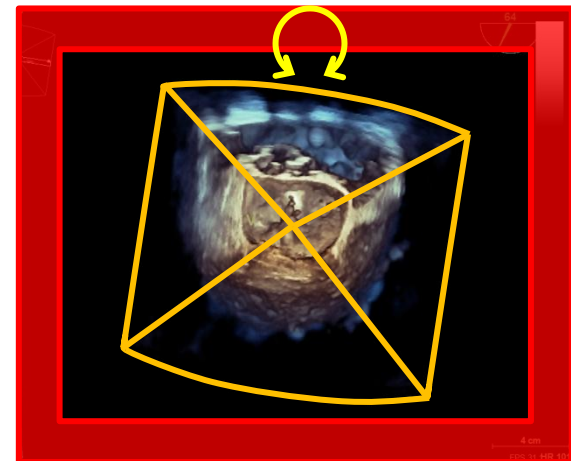
## Absolute navigation mode

Moving the mouse cursor into the highlighted areas (here marked in red) will change the functionality of the trackball

Cursor symbol: 



Cursor symbol: 

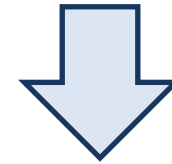
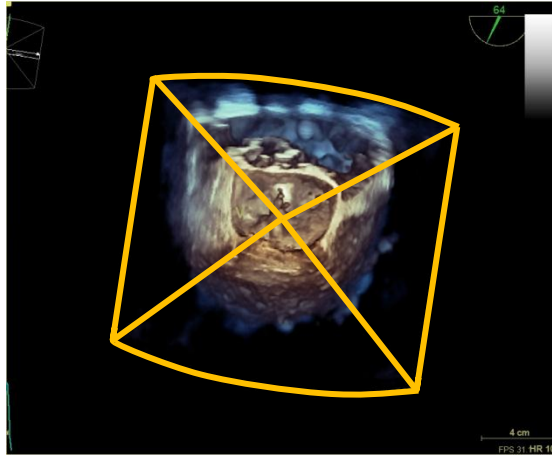


# Navigation on EchoPAC up/down

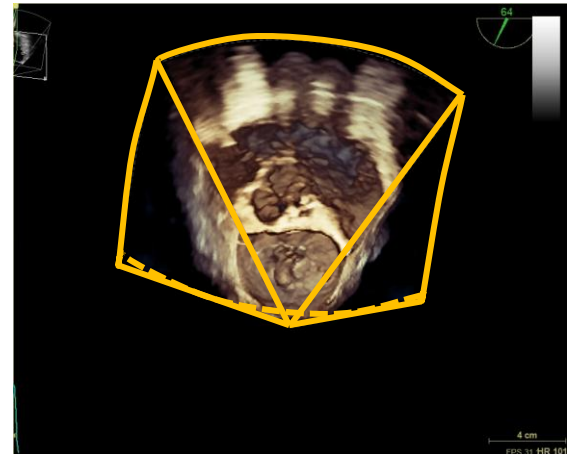
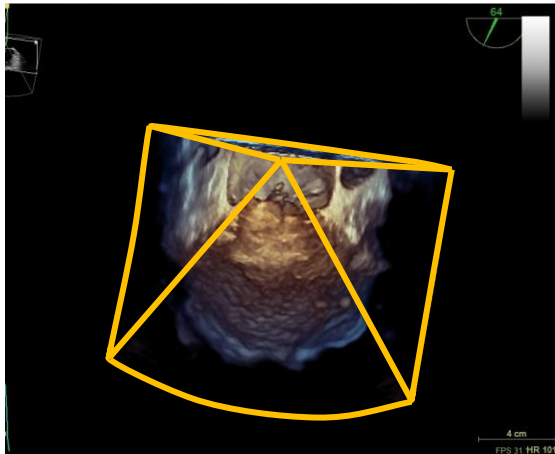
Cursor symbol:



Mouse movement



Mouse movement



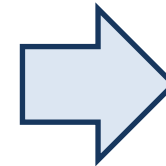
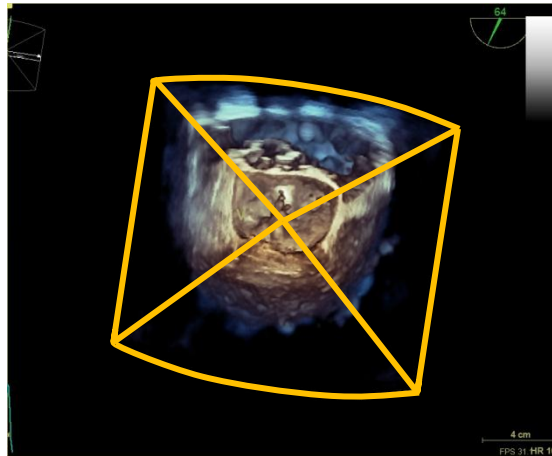
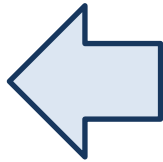
# Navigation on EchoPAC

## Tilt left/right

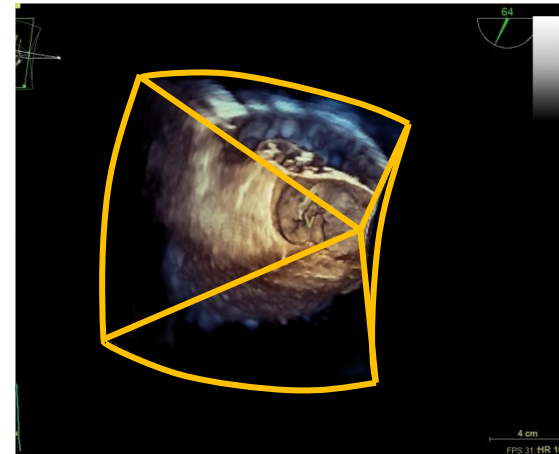
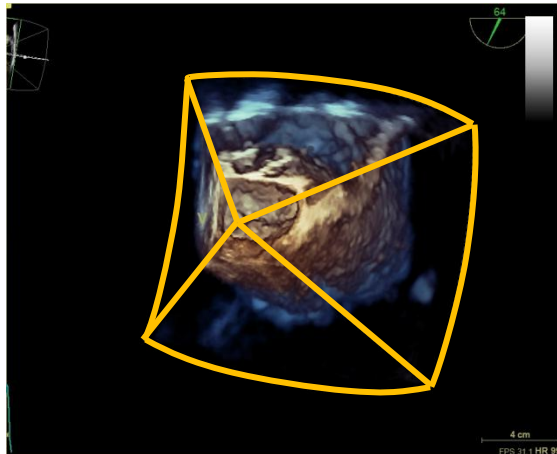
Cursor symbol:



Mouse movement



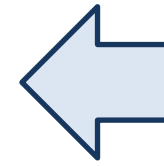
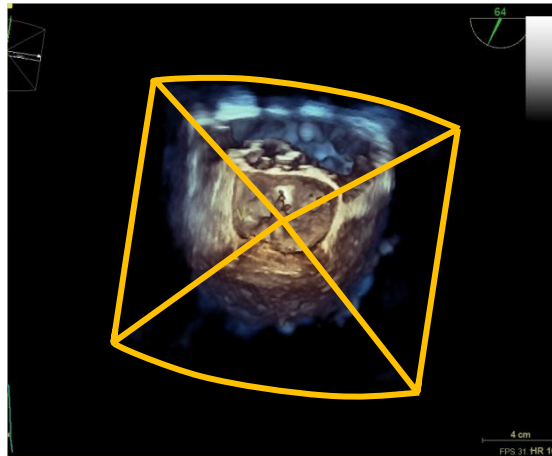
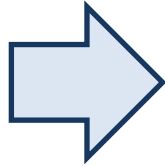
Mouse movement



# Navigation on EchoPAC clockwise/counterclockwise

Cursor symbol: 

Mouse movement



Mouse movement

