

**Exporting images in
DICOM[®] format
With
Embedded
DICOM Viewer**



Table of Contents

EXPORTING IMAGES IN DICOM FORMAT WITH EMBEDDED DICOM VIEWER	1
General information	3
Which devices can be used	3
Setting up the System	3
Exporting Images in DICOM format	6
Running the images on any PC	7

NOTE: This hand out is a summary. For more information please refer to the user manual and/or reference manual.



Exporting images in DICOM format with embedded DICOM Viewer

General information

The possibility to include a DICOM viewer on your export Device is only available on the following systems:

Vivid* S5	Software version \geq BT11
Vivid S6	Software version \geq BT11
Vivid i	Software version \geq BT11
Vivid q	Software version \geq BT11

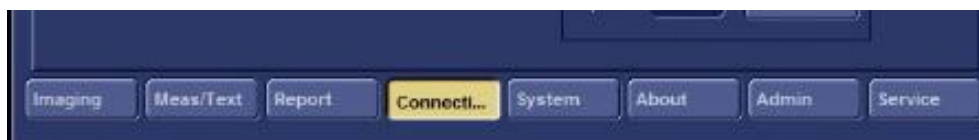
Which devices can be used

Either CD/DVD-R or USB Memsticks can be used

Setting up the System

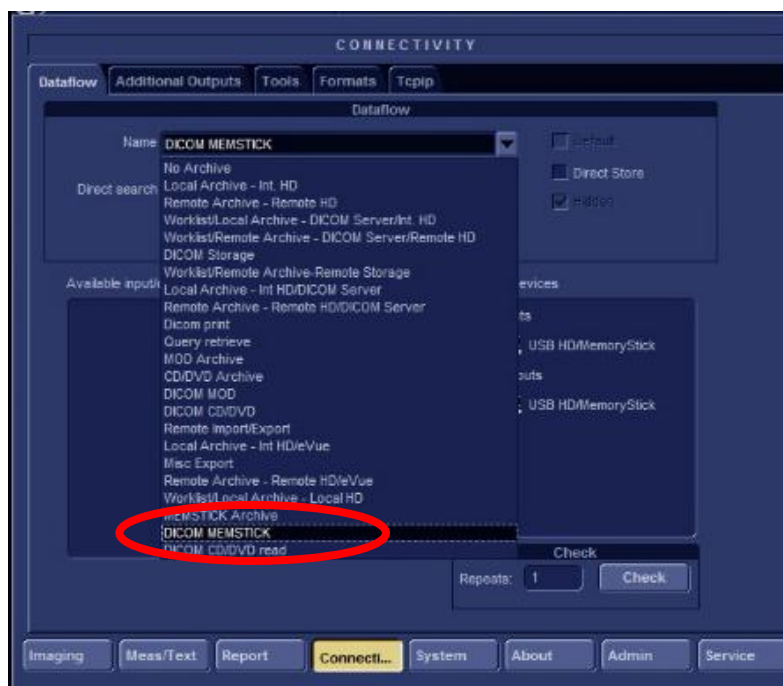
In order to get the DICOM viewer copied on your export device, it needs to be configured once in the beginning.

1. Make sure the DICOM Viewer option is installed.
2. Press **Config**.
3. Select the **Connectivity** tab.

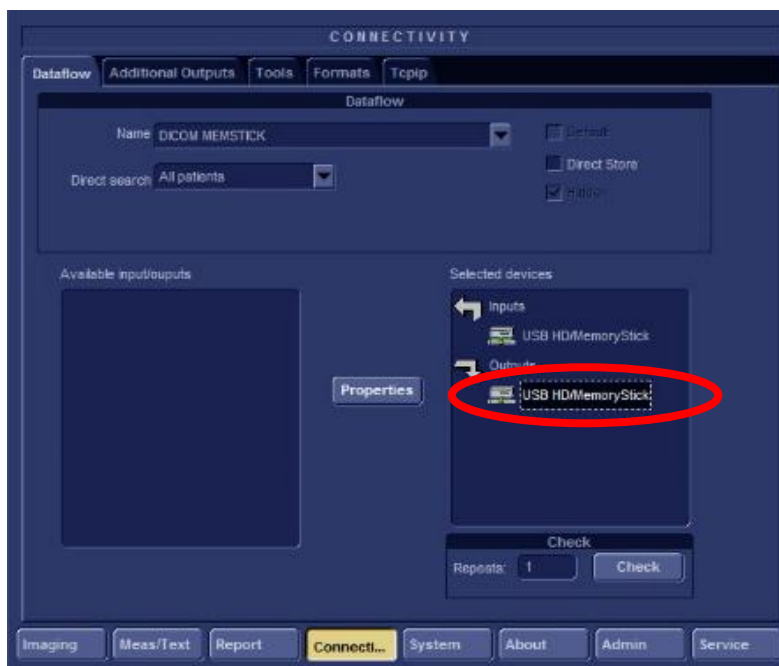


*Trademark of General Electric Company

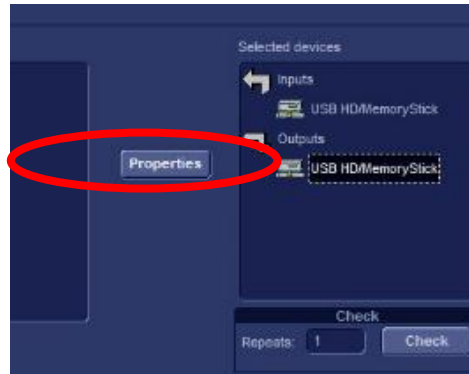
4. Under the Dataflow tab, in the "Name" combo-box field, select DICOM Memstick as shown in the figure on the left, below. (When using CD/DVD select the DICOM CD/DVD dataflow)



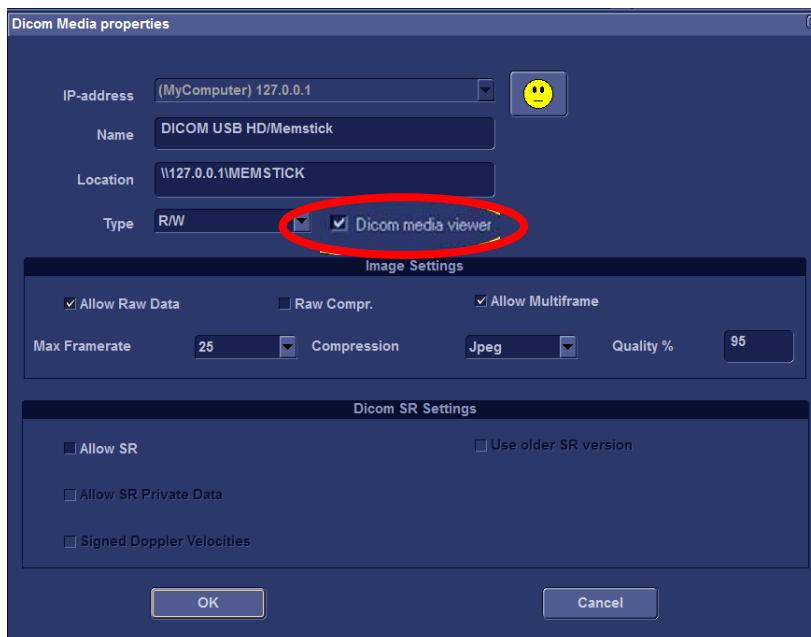
5. Select USB HD/Memory Stick output in the selected devices as shown on the figure on the right, below.



6. Click **Properties**.



The DICOM Media Properties window appears.



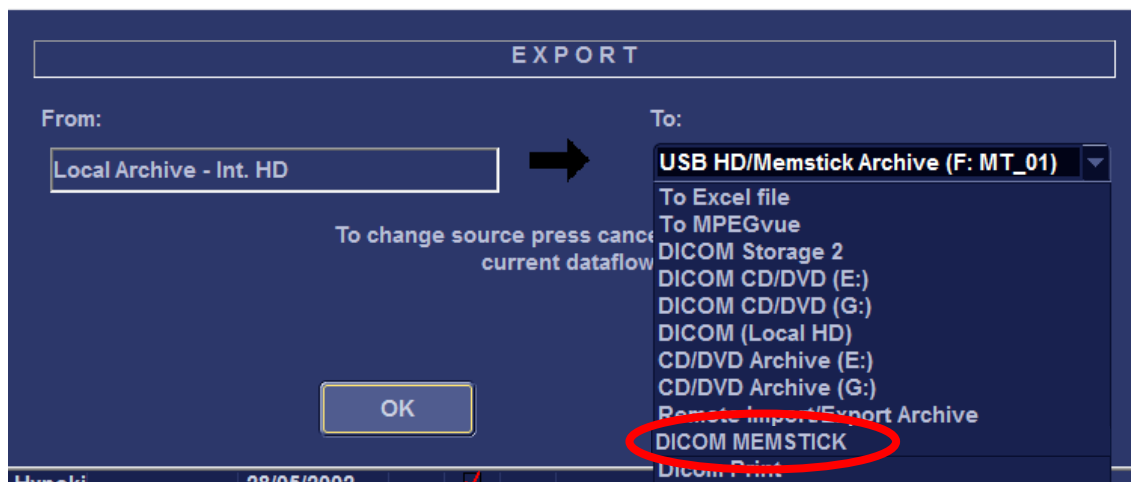
Place a checkmark next to **DICOM media viewer** in order to include the DICOM viewer in the output media.

Press **Ok**, to store this new setting.
Go back to the Archive.

Exporting Images in DICOM format

Complete Patient examinations can be exported to a USB Memory Stick or CD/DVD with the embedded DICOM viewer on the media.

1. While in the Archive Screen, press **Export**
2. Select the **DICOM MemStick or DICOM CD/DVD** in the 'To' menu



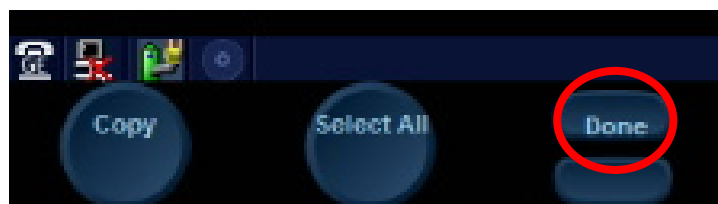
3. Press **OK**
4. Select the required Patient\Patient's\Exam\Exam's you would like to Export

VIVID E9 TEE	VIVID E9 TEE	VIVID E9 TEE	01/02/2013
Vivid q	TEE	Vivid q TEE	23/04/1939
Vivid S6	VS6	Vivis S6	
Vivid_i_Demo	Vivid_i_Demo	Vivid_i_Demo	18/12/2012
Vivid_Q	Demo	VIVIDDE_2416!	
Vivid_S5_Demo	Demo	VIVIDDE_2009!	

5. Press **Copy**, by using the rotational knob



6. Once the process is completed (following on screen messages and progress bar) press **Done**, using the soft menu push button



7. Eject the USB Memory Stick or CD/DVD by using the **Eject** key on the KB or by pressing **Alt+E**

Running the images on any PC

Following this process a simple, self-contained DICOM viewer is burnt to the removable media, along with the selected exams.

It allows reviewing the exported Patient examinations on a PC without the need of any software installation.

Insert the USB memstick or CD/DVD into a PC.

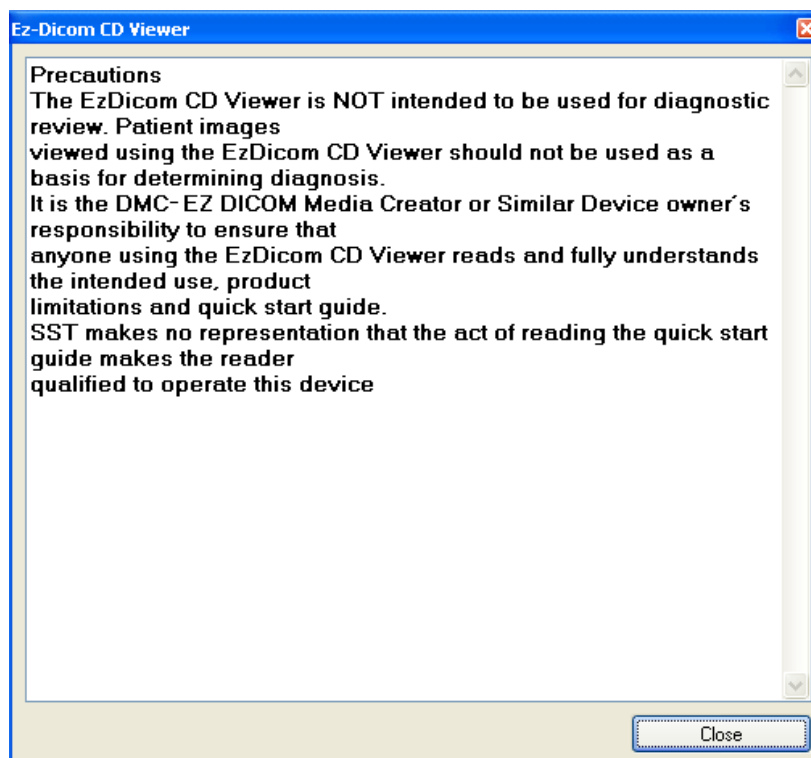
Note

Minimal requirements for the Viewing PC are Windows® 2000 or higher (Windows XP Pro, Windows Vista (32bit), Windows 7 (32/64 bit))

In case the software doesn't start automatically, open the content list of the device and double-click on EZ-DicomCDViewerGE.exe

| The Dicom viewer opens automatically and you can select your patient's examinations to view the images.

First a window opens with the following remarks:



Read the text, and then press **close** to get further on.

Now you will be able to view the stored images.

©2013 General Electric Company – All rights reserved.

GE and GE Monogram are trademarks of General Electric Company

GE Medical Systems Ultrasound & Primary Care Diagnostics, LLC, a General Electric company doing business as GE Healthcare.

DICOM is the registered trademark of the National Electrical Manufacturers Association for its standards publications relating to digital communications of medical information.

Windows is a registered trademark of Microsoft Corporation in the United States and other countries.