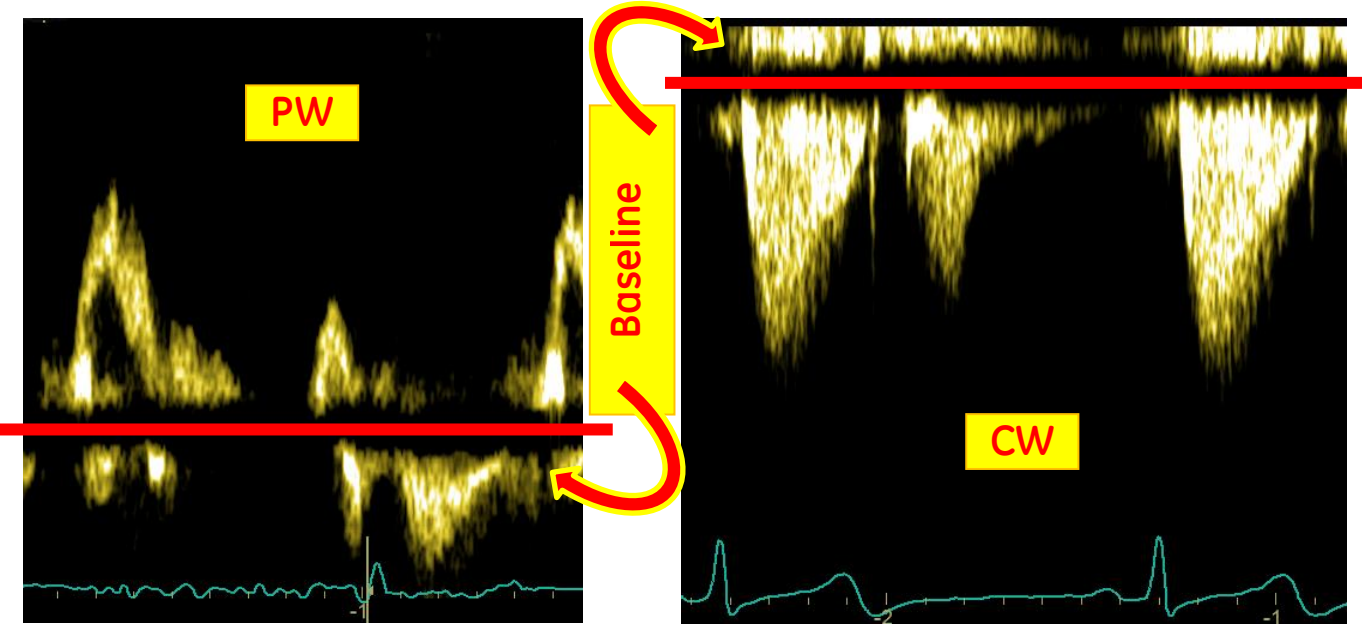


Application News



GE imagination at work

Unlink PW and CW Doppler



Content

Unlink PW and CW Doppler.....	2
PW/CW unlinked.....	4
Background.....	4
An example:	4
Be aware.....	4
How to configure	4

NOTE

This hand out is a summary.
For additional information, please refer to the user manual and/or reference manual.

PW/CW unlinked

Background

In older GE software versions the baseline settings of PW and CW were linked to each other. When moving the **baseline** up or down in PW, the setting was applied to CW as well and the other way around.

Depending on the workflow it might be useful to have different settings for PW and CW i.e. in the user preset.

Therefore with Vivid™ E9 with XDclear™ the user has the option to unlink the two Doppler modalities.

In addition to the baseline the **gain** settings of the Doppler modalities can be set up differently as well.

An example:

One user is doing the exam in the following order:

PW on Mitral valve, a bit later then

CW on Aortic valve

To help reduce the need to adjust the baseline frequently, the system can be set up to:

PW baseline a bit further down, to show the MV inflow signal

CW baseline a bit further up, to show the AV outflow

Be aware

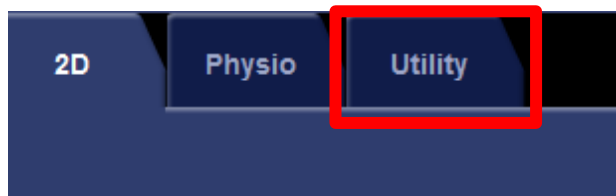
When you unlink the Doppler modalities, they will work independently from each other through the entire exam, not only as a start set up.

This is a general set up and will impact all of your presets. It's not preset dependent.

How to configure

Entering the config

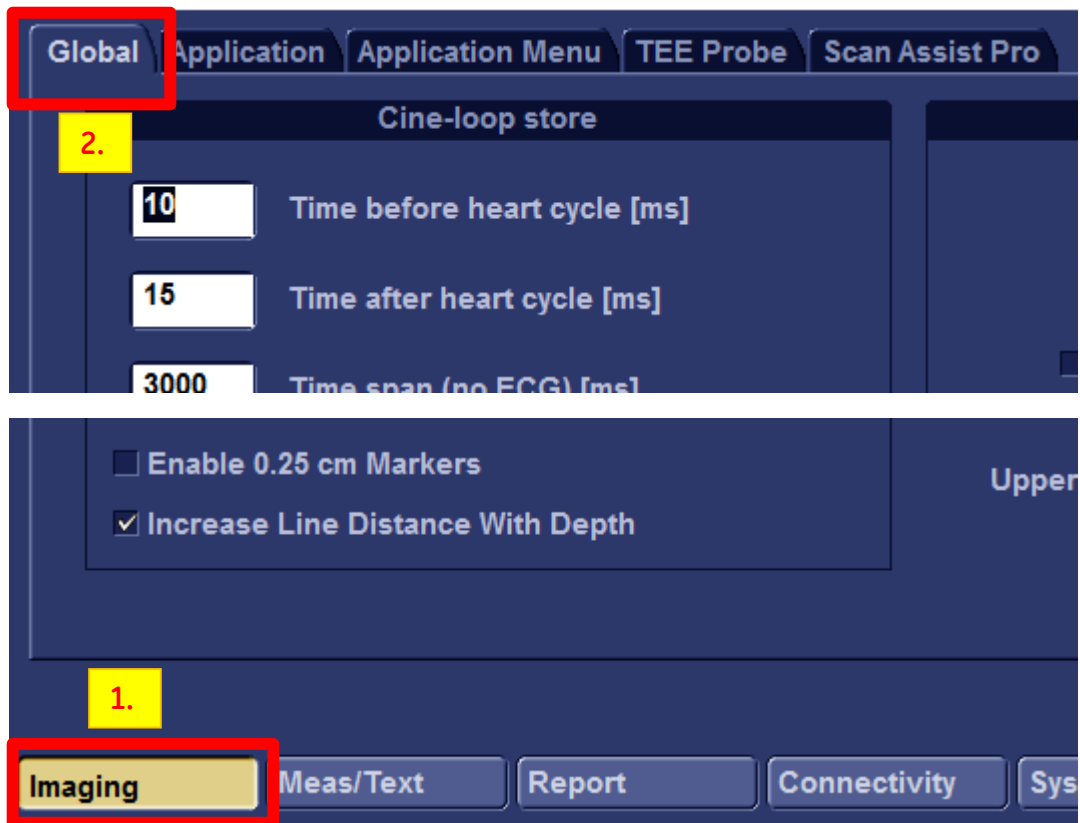
On the touch panel, use the tab for **Utility**



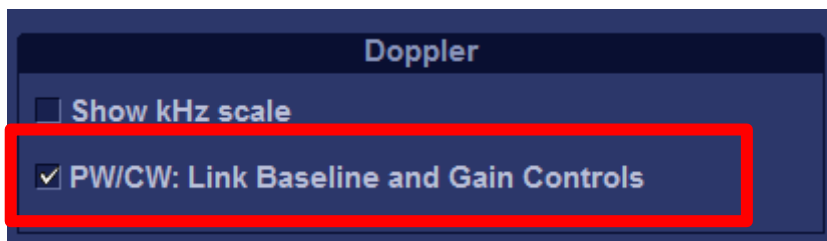
Press on **Config**



Make sure you are on in **Imaging** and on the **Global** Tab



In the middle part of the left side you will find this option here



Remove the checkmark if you want to unlink the Doppler modalities from each other

If you uncheck this option you can optimize the gain and baseline of PW and CW independently and store it to a user preset.